

The following manual describes the procedure for a software update via RS-232

1. Needed equipment

- Software "STB Tool V 1.4"
- RS-232 cross cable 9-Pin D-Sub female type (so called null-modem cable)
- PC with RS-232 connector
- Your receiver

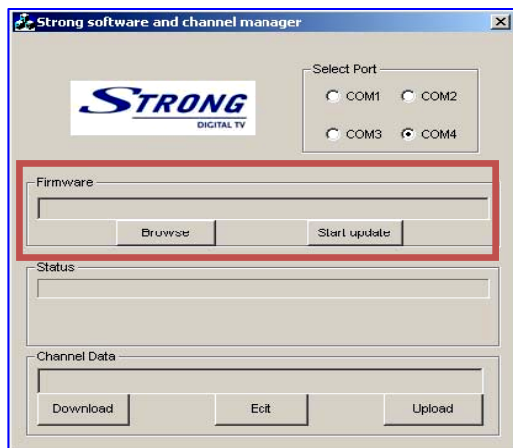
2. Connecting PC and receiver

- Switch OFF your receiver and if necessary, your PC
- Connect both through an RS-232 cable

3. Software Download

To be able to load the Software update into the receiver, please follow these steps:

- Save the Zip file in a preferred folder on your PC, than unpack it there.
- Afterwards you can start the "STB Tool V 1.4".
 - Choose the "COM Port" according to your connection of RS-232 cable.
Below example shows selected "COM4".



- Then in above marked area *Firmware* click on "Browse" to select the corresponding software from the folder and press "Open" to confirm.
- Now you can press "Start Update" to start downloading the SW in the receiver.
- Now you can switch ON your receiver and loading progress will be shown in *Status*.
- Once the download is finished message is shown "Burn Flash OK", there press OK and close STB Tool V 1.4.

Warning: After an update the receiver restarts automatically! During this process NEVER disconnect the receiver from the main or switch power OFF! This can damage your receiver and warranty will be void!