

PC Program installation

0. What's New in Flash-based relook 300S

In the new, flash-based relook 300S, followings are different from the previous, HDD-based one.

- (1) relook's flash memory size has increased to 8MB to accommodate Linux kernel, system software, application software, and DBs. Since all software resides on flash memory, it works similar to 2-CI slot receivers even without HDD installed.
- (2) It is fully functional without an HDD with the exception of EPG and HDD-dependent operations such as trick plays for live and recordings.
- (3) User can select his/her preferable HDD in the market and install it by himself/herself.
- (4) HDD formatting is supported.
 - A. Select "FORMAT" from User's Option in the Main Menu.
 - B. Relook 300S will be restarted and its HDD will be formatted and re-initialized.
- (5) Exchange HDD with your friend.
 - A. Select "EXCHANGE" from User's Option in the Main Menu.
 - B. HDD will be software-protected and current DB will be maintained in the HDD.
 - C. If you install this HDD into other relooks, the DB maintained in HDD will be used.
- (6) When updating flash image, both the DB in flash memory and in HDD are updated and synchronized.

1. Getting Started

Warning!!!

uboot — the boot-loader of flash-based relook 300S — is the most sensitive part and have to be upgraded with caution. During flash upgrading, relook should not be turned off. In case of uboot upgrade failure, please contact to support@dgstation.co.kr.

Each version/release of flash image has naming convention as FlashImages_v.1.1.0_R1.zip and contains all or some of followings:

Image	Descriptions	HDD Auto Format
usb_uboot	<ul style="list-style-type: none"> • Boot loader image for relook 300S. 	
usb_kernel	<ul style="list-style-type: none"> • Linux kernel image for relook 300S. 	
usb_root	<ul style="list-style-type: none"> • Application software image for relook 300S. • Usually, incremental upgrade of relook 300S is done by downloading/replacing this image. 	
usb_db	<ul style="list-style-type: none"> • Full DB image for relook 300S. • Downloading this image replaces and initializes the DB previously on flash and HDD. 	Optional
usb_usrdb	<ul style="list-style-type: none"> • Incremental db image for relook 300S. • Download this image performs incremental DB updates such as new TPs, new multi-languages, etc. 	
usb_flash_entire	<ul style="list-style-type: none"> • Entire flash image for relook 300S. 	Optional
usb_flash_without_boot	<ul style="list-style-type: none"> • Entire flash image for relook 300S without uboot. 	Optional

In order to download new flash images, you should install a download utility “FlashTools” onto your PC.

The “FlashTools” is an integrated utility for downloading new flash images using USB or serial connection. It is preferred to use the USB connection. In case of serial downloading, you need special images which will be released officially soon.

2. Installing Flash Download Utility “FlashTools”

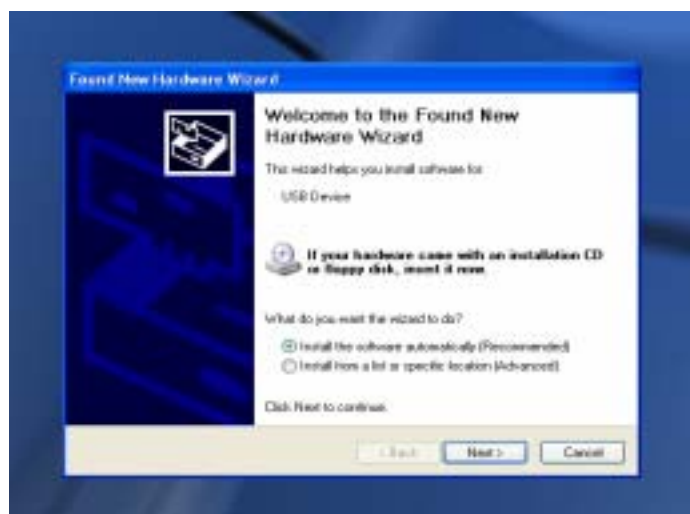
1. Double click the “Flash_Installer.exe” icon and follow the installation procedures.
2. A new folder (Flash_Tools) will be created under the “Program Files” folder. The download utility and device drivers will be installed in the “Flash_Tools” folder.

3. Installing USB Driver for Flash-based relook 300S

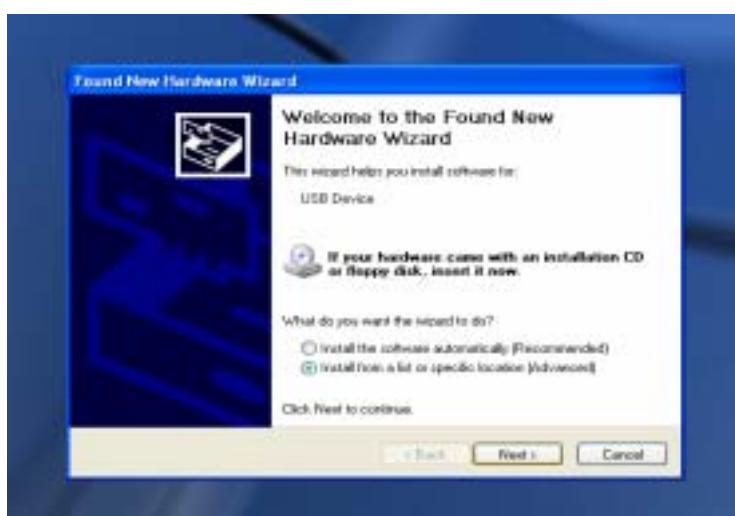
Before invoking the flash download utility “FlashTools”, your PC have to recognize relook 300S first. Please follow below instructions carefully.

Remark 1 : Before installing the USB driver for relook 300S onto your PC, you have to turn your relook 300S off.

1. Connect the USB cable between USB port of PC and USB port of relook 300S.
2. While pressing and holding the Power button on the front of the relook 300S, press Up button on the front for a second (during when TV displays "Welcome Image") then release the Up then the Power buttons. The TV screen changes from "Welcome Image" to the famous "Penguin Image" and your PC detects relook 300S as a new USB hardware and invokes the Driver Installation Wizard automatically.



3. Please follow the instructions of the Driver Installation Wizard.



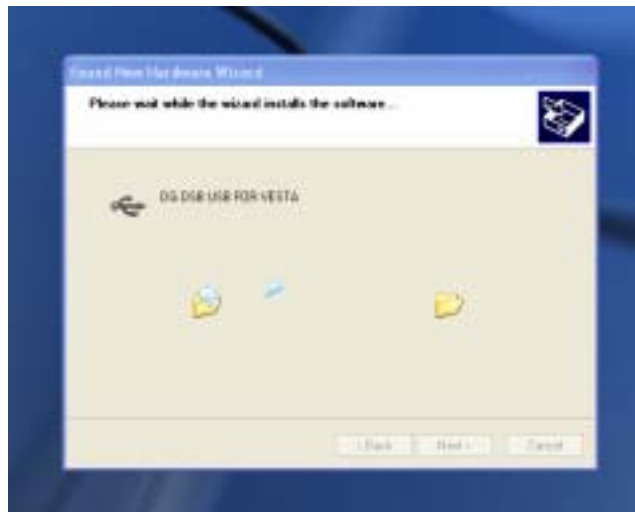
4. A Flash tool folder will be created automatically. Select the folder at C:/programfiles/Flash_tools/



5. Click on "OK" on the pop-up window and "Next" on the Installation Wizard.



6. Please wait until the wizard finish the driver installation. If the wizard displays an alert message window relating with USB compatibility test, please click "Continue."



7. Click "Finish" on the pop-up screen to finish the installation. Make sure that the front of relook 300S displays "USB".

