

TDC FAQ

Contents

[Connection PC -> Box](#)

[FTP](#)

[Channellist](#)

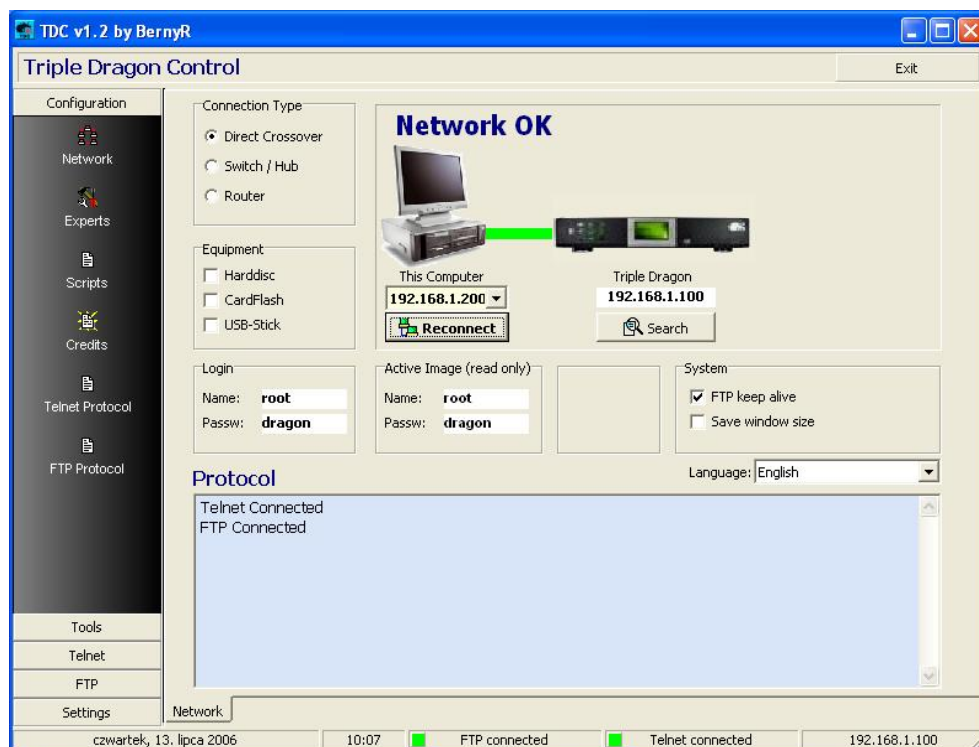
[Telnet](#)

Connection PC -> Box (program configuration)

Start TDC program

- direct connection TD/PC with using crossover cable

In option “**Connection Type**” select **Direct crossover**



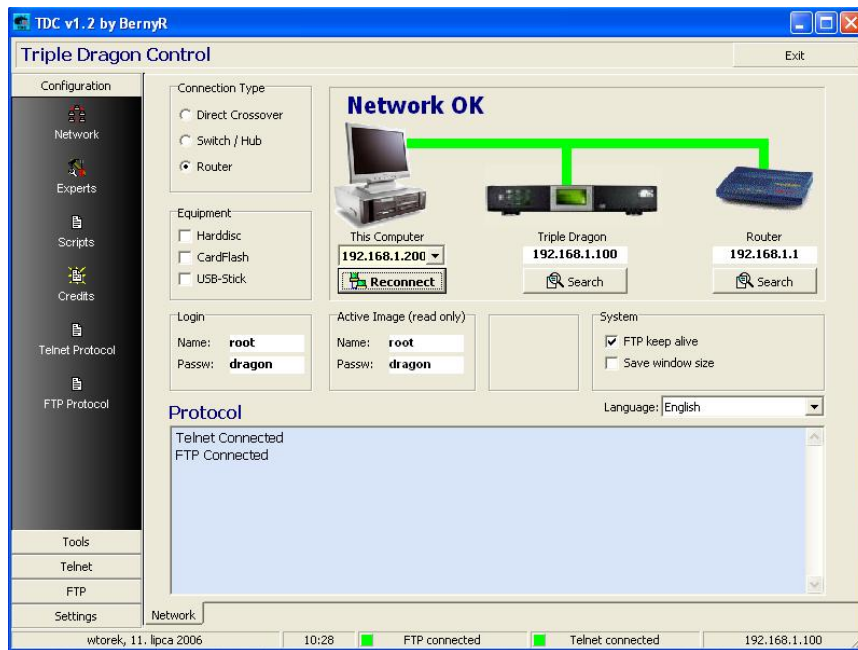
Below inscription “ **This Computer** ” select your PC IP however below inscription “ **Triple Dragon** ” enter TD IP.

In section **Login** and **Active image**, enter Name and Password for connect TDC with TD (if you don’t change TD password, enter **dragon**)

Now press **Connect/Reconnect** button and you should get inscription **Network OK**.

- network connection with using Router

In option “**Connection Type**” select **Router**



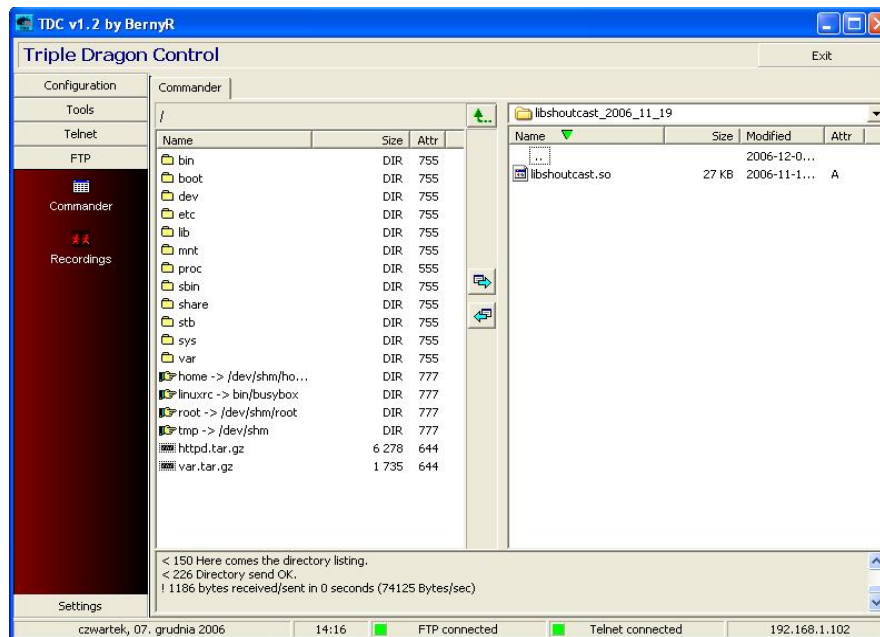
Below inscription “ **This Computer**” select your PC IP, below inscription “ **Triple Dragon**” enter TD IP however below **Router** inscription enter router IP.

In section **Login** and **Active image**, enter Name and Password for connect TDC with TD (if you don’t change TD password, enter **dragon**)

Now press **Connect/Reconnect** button and you should get inscription **Network OK**.

FTP

FTP bookmark you can use to: send files, installation new plugin on **system** partition and etc.



Emu & keys installation

1. Table, which illustrate all emu and keys file name, which using.

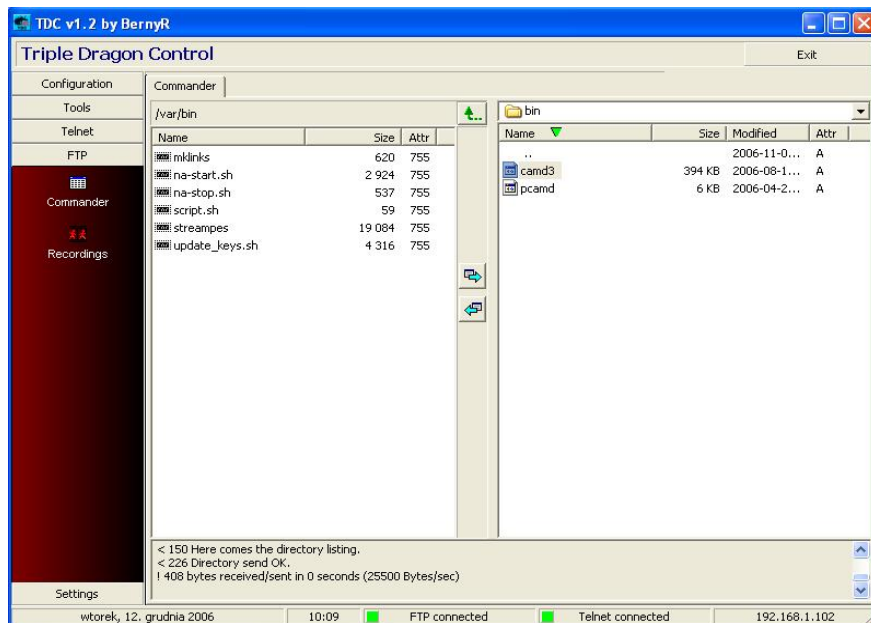
Emulator	Newcamd	Evocamd	Redegast	Mgcamd	G**x	Camd3
keys	constantcw, keylist, ppua, rsaclist, tpscrypt	keylist.txt	softcam.key	softcam.key	Seca, via, nagra, crypto, conax, irdeto	Camd3.keys
directory	/var/scce	/var/keys	/var/keys	/var/keys	/var/keys	/var/keys

1a. Table, which illustrate how config file use emu and where this config file must be.

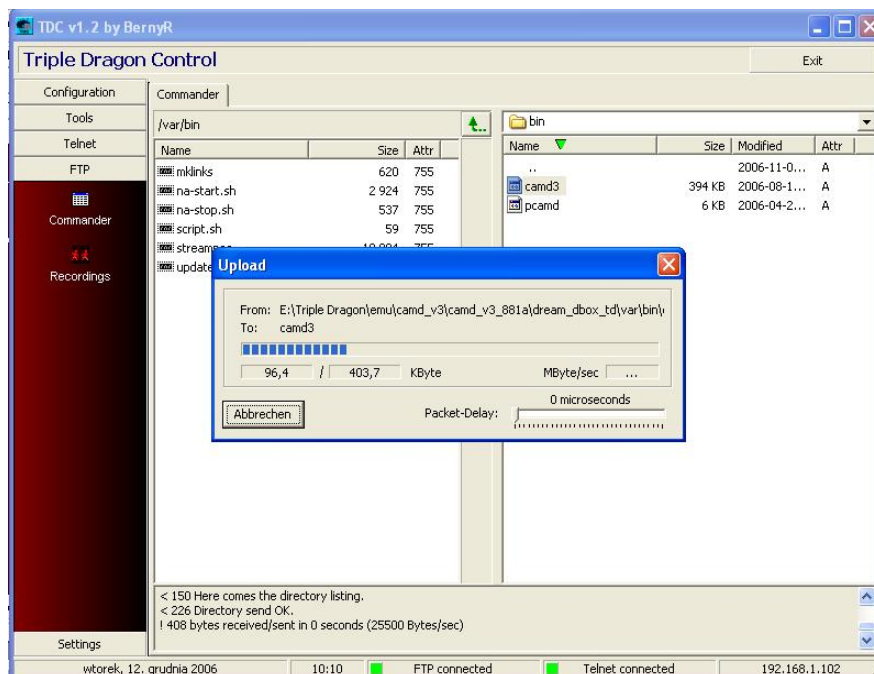
Emulator	Newcamd	Evocamd	Redegast	Mgcamd	G**x	Camd3
Config file	newcamd.conf,	camd_cfg	Redegast.cfg	mg_cfg	g*ox_cfg	camd3.config
directory	/var/tuxbox/config	/var/keys	/var/etc	/var/keys	/var/keys	/var/keys

2. Installation emu file to Box

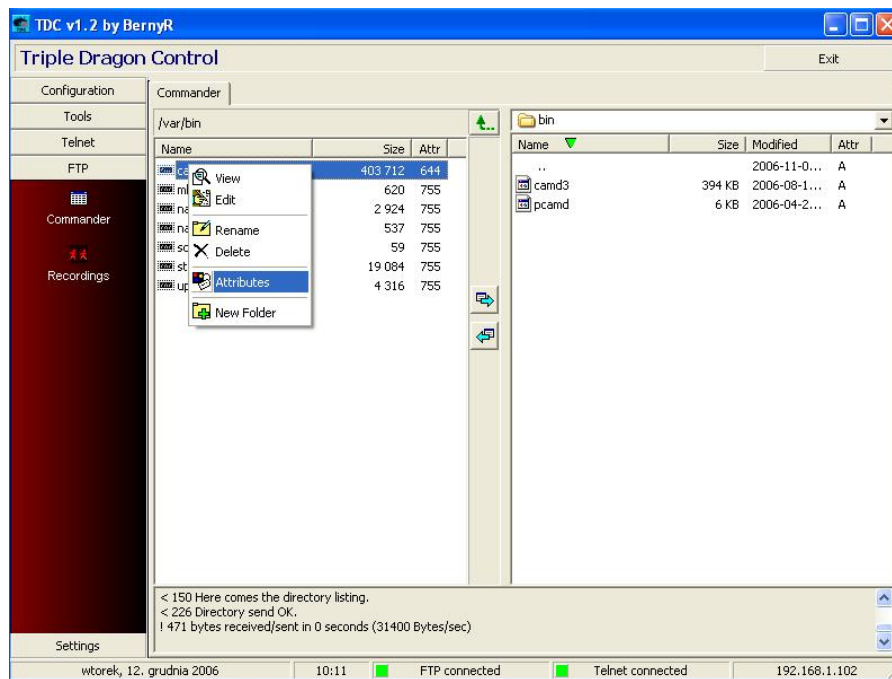
On start, go to **FTP** bookmark in **TDC** and then to **/var/bin** directory.



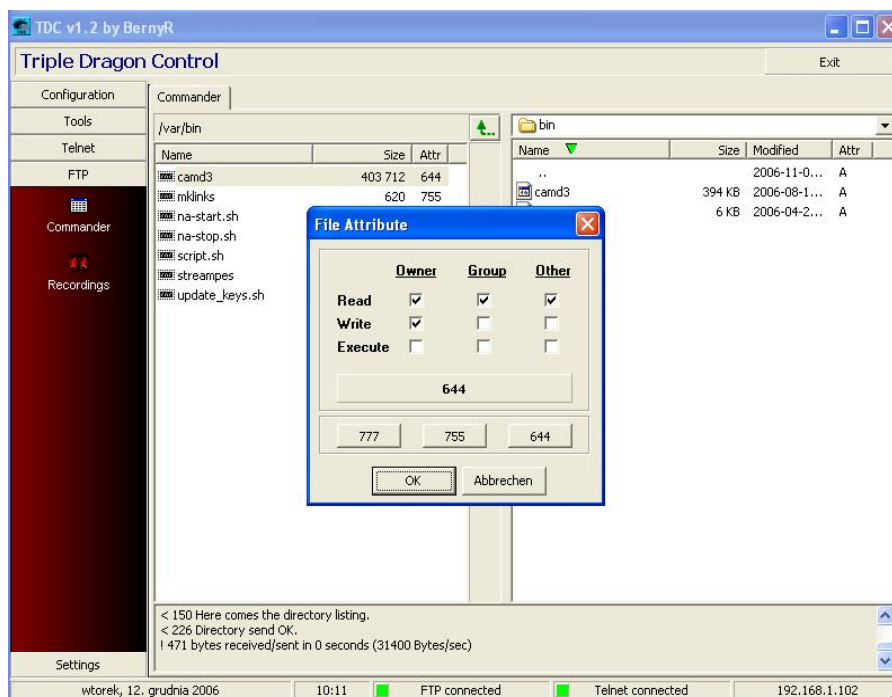
Select on the **right side** emu, which you want to install in TD and press **left arrow green** button. That same you make for all emu binary files, in this description installation is written for camd3. Remember /var partition have limited size. How to check /var size look in [Telnet](#) section.



At this moment emu binary files is **sending** to box



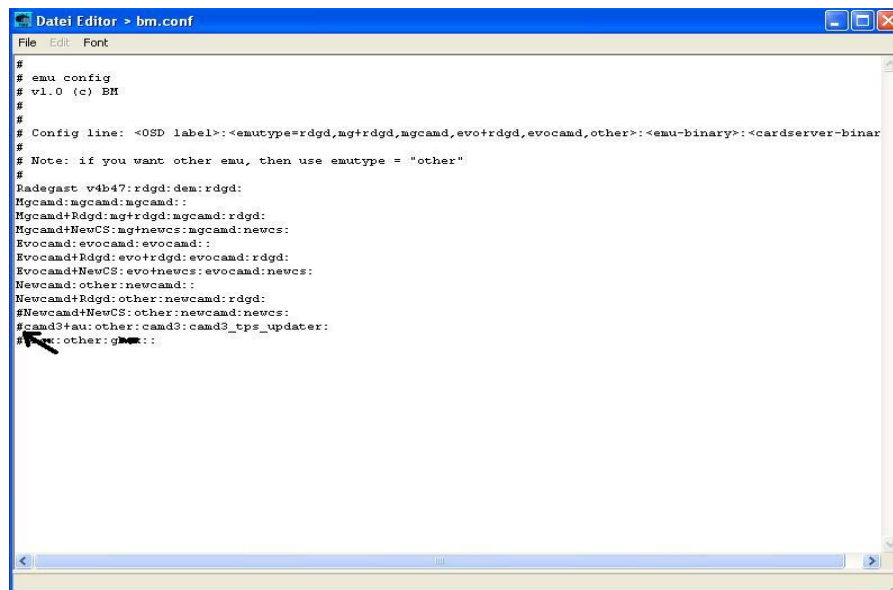
When files is sent, press **right mouse** button on file name, which was copied to box and select **Attributes** option.



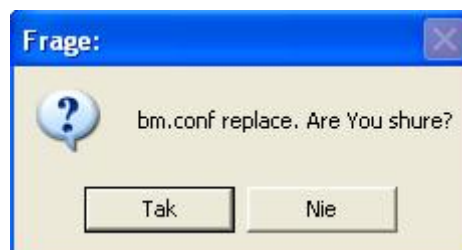
Now press **left mouse** button on **755** bookmark and **OK**.

After emu installation, go to **Menu ->Extras -> BMtoy -> configuration**, select emu, which you copied to box and press **OK** button.

If after emu installation in **BMtoy**, you don't have possibility select emu then in **bm.cfg** file in **/var/etc** remove **#** before emu name, which you installed and **restart box**.



When you remove **#**, go to **File** bookmark and press **left mouse** button on **Save & Exit** option.

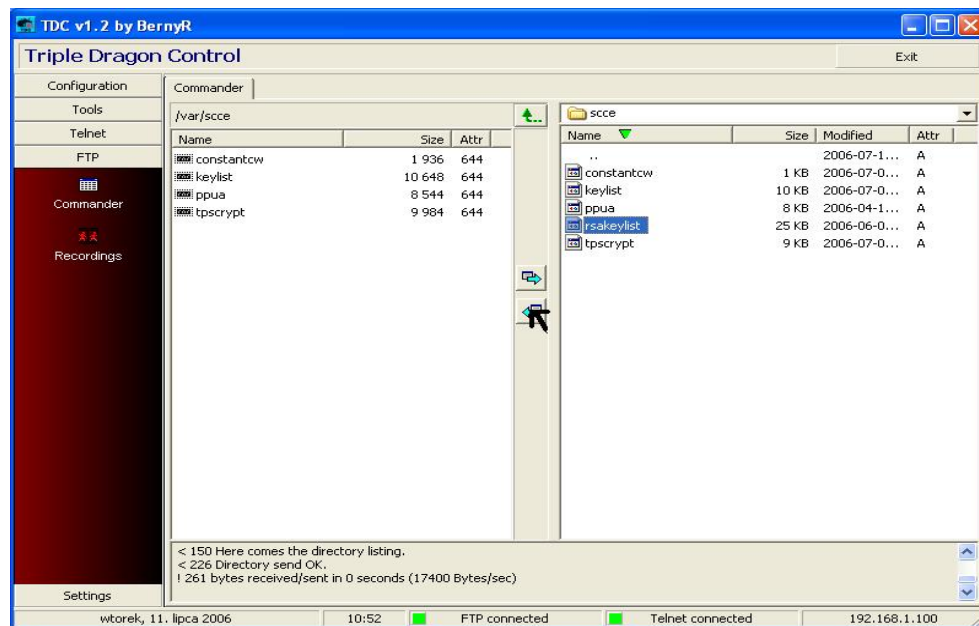


Confirm changes by pressing **“Tak”** button. Button **“Nie”** discard changes

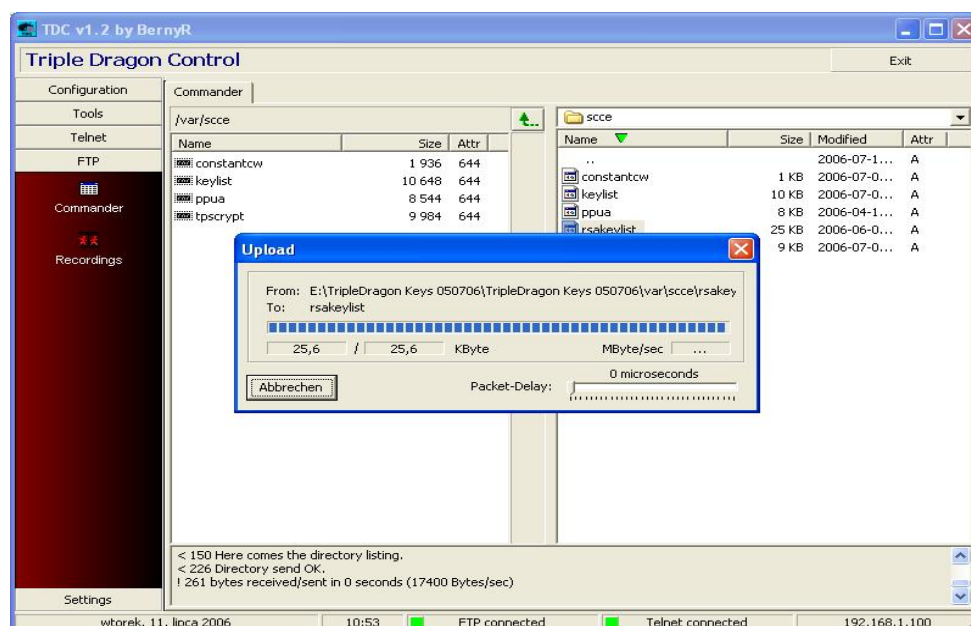
3. Copy keys to Box

If directories **keys** and **scce** are empty, then with using **TDC** you can copy keys file from harddisk on PC to box. Below picture, show, how to copy keys file to **scce** directory. For **keys** directory is the same.

On the left **TDC** side, open **scce** directory however on the right side open **keys** directory from PC.

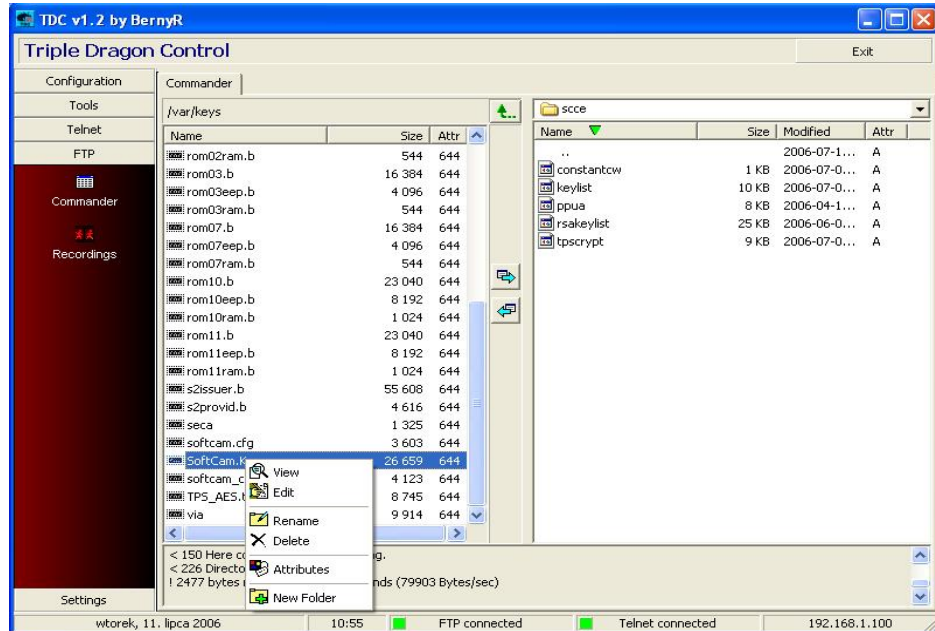


Select file on the right side and press **left arrow** button to start copy (**right arrow** button is for copy keys file from box to PC). On PC window you see progress belt.

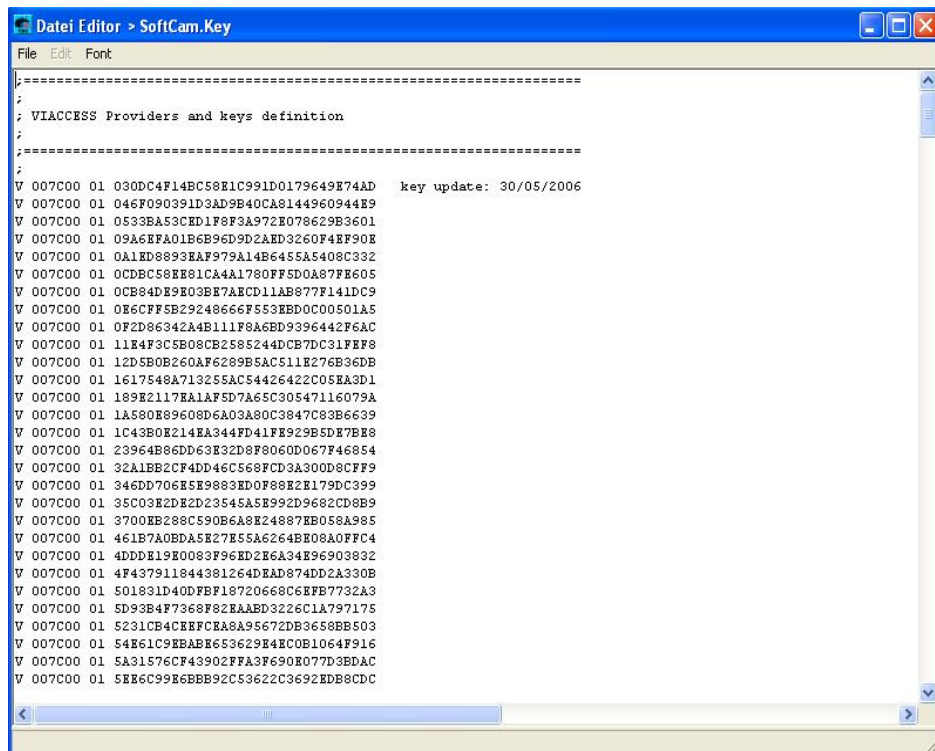


4. Edit key for MgCamd and Redegast

According with table above, this emu use the same keys file: **softcam.key**. Go to **/var/keys** directory and press **right mouse** button on this file. Now you see new small menu.



Press **Edit** option and on PC you see new window:

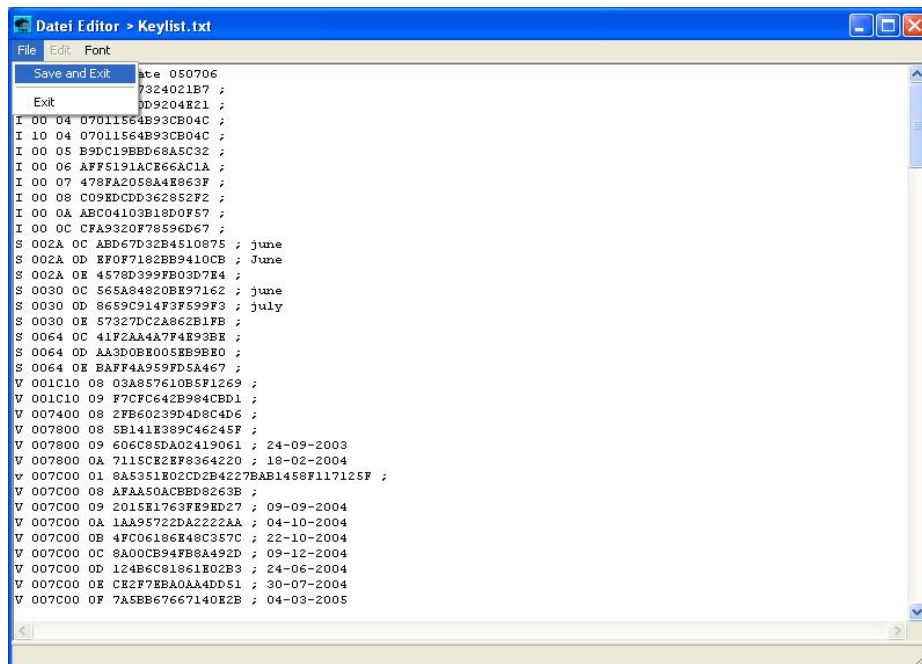


When new key is added or edited, very important is keep order:

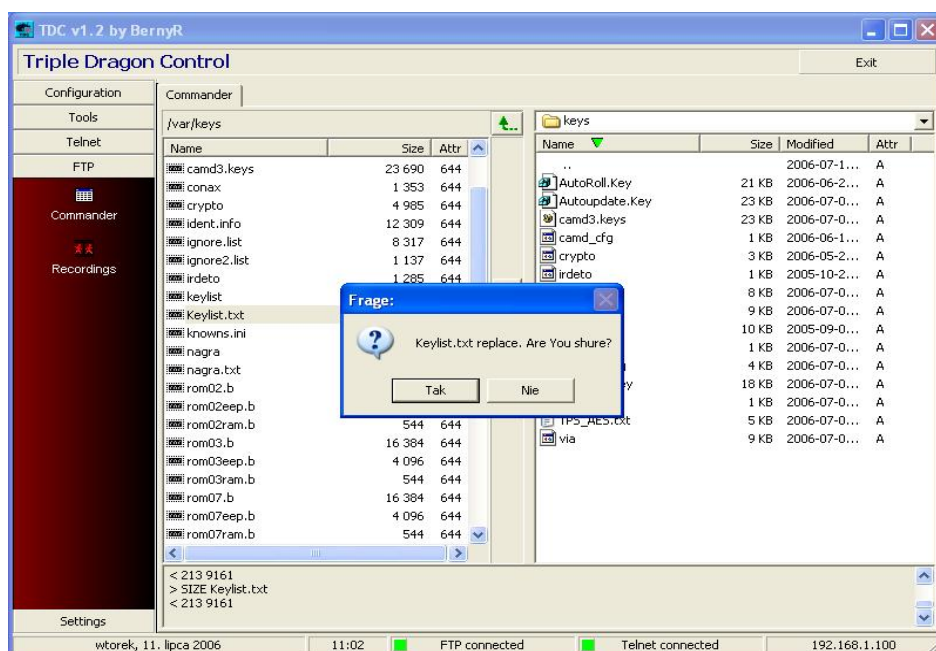
- 1 column – system code
- 2 column - Provider number
- 3 column - key number
- 4 column - key

If you want to change key, search appropriate line with Provider ID and change key, which is in 4 column. If you want add new Provider, write new line with appropriate order.

When all change are made press **File** bookmark then **Save & Exit**.

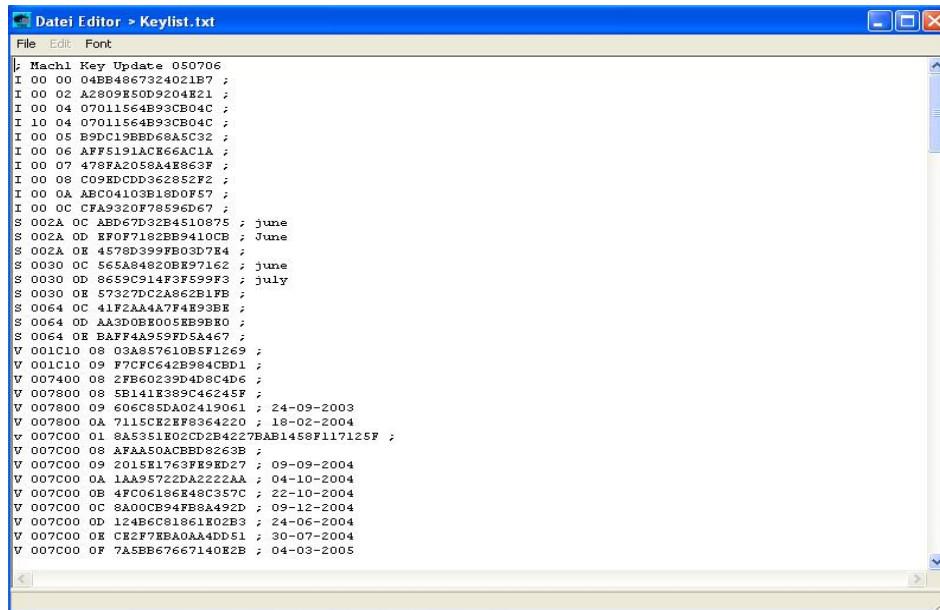


Now, press “**Tak**” button



5. Edit key for Evocamd

According with table above, approach to edit **keylist.txt** file. Start editing and save & exit change is the same, how for **softcam.key**.



Format for this file is very like, how **softcam.key**. Column format is the same:

- 1 column** – system code
- 2 column** - Provider number
- 3 column** - key number
- 4 column** - key

Very important is, after write new key and edit key, enter space after 4 column and add character “;”.

6. Edit for camd3.

According with table above, approach to edit **camd3.keys** file. Start editing and save & exit change is the same, how for **softcam.key**.

Format for this file is different than previous. Column appoint following parameters:

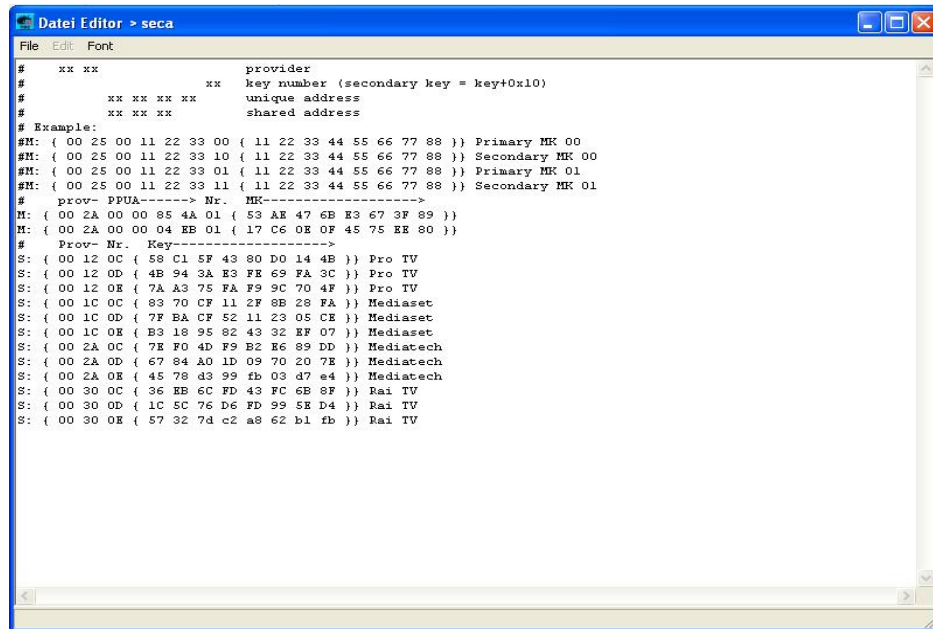
- 1 column** - system ID e.g. 0100 - seca
- 2 column** - Provider number e.g. 007c00
- 3 column** - write 0000000000, for E1 entry, write 0000000001 as different than previous entered E1 for the same Provider
- 4 column** - key number
- 5 column** - key

After each column, enter character “:”. Only after 5 column don’t add “:” character

7. Edit for g**x

According with table above, approach to edit **seca**, **via**, **nagra**, **crypto** file. Start editing and save & exit change is the same, how for **softcam.key**.

For seca file



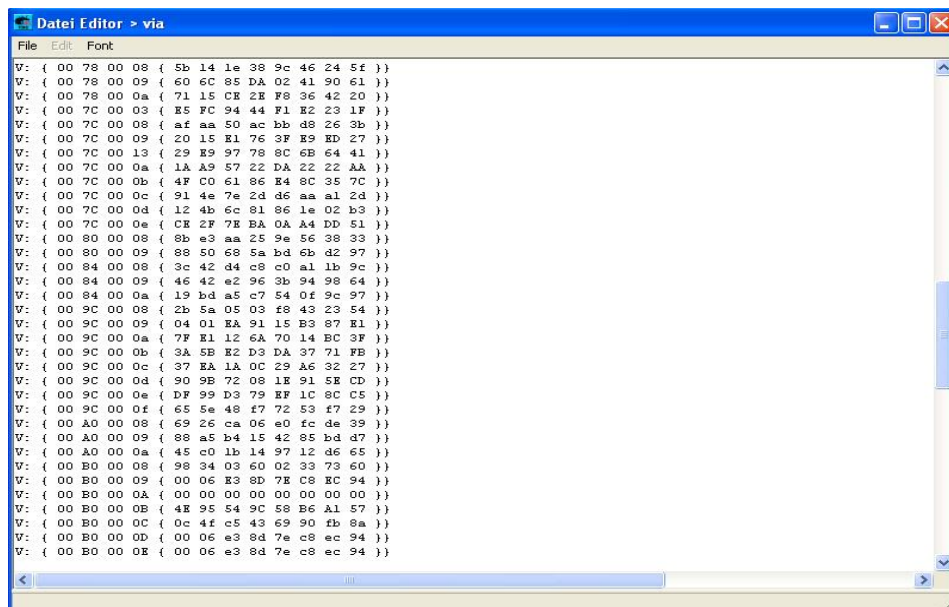
```
File Edit Font
# xx xx provider
# key number (secondary key = key+0x10)
# xx xx xx xx unique address
# xx xx xx shared address
# Example:
#M: { 00 25 00 11 22 33 00 { 11 22 33 44 55 66 77 88 }} Primary MK 00
#M: { 00 25 00 11 22 33 10 { 11 22 33 44 55 66 77 88 }} Secondary MK 00
#M: { 00 25 00 11 22 33 01 { 11 22 33 44 55 66 77 88 }} Primary MK 01
#M: { 00 25 00 11 22 33 11 { 11 22 33 44 55 66 77 88 }} Secondary MK 01
# prov- pPUA-----> Nr. MK----->
M: { 00 2A 00 00 85 4A 01 { 53 AE 47 6B E3 67 3F 89 }}
M: { 00 2A 00 00 04 EB 01 { 17 C6 0E 0F 45 75 EE 80 }}
# Prov- Nr. Key----->
S: { 00 12 0C { 58 C1 5F 43 80 D0 14 4B }} Pro TV
S: { 00 12 0D { 4B 94 3A E3 FE 69 FA 3C }} Pro TV
S: { 00 12 0E { 7A A3 75 FA F9 9C 70 4F }} Pro TV
S: { 00 1C 0C { 83 70 CF 11 2F 8B 28 FA }} Mediaset
S: { 00 1C 0D { 7F BA CF 52 11 23 05 CE }} Mediaset
S: { 00 1C 0E { B3 18 95 82 43 32 EF 07 }} Mediaset
S: { 00 2A 0C { 7E F0 4D F9 B2 E6 89 DD }} Mediatech
S: { 00 2A 0D { 67 84 A0 1D 09 70 20 7E }} Mediatech
S: { 00 2A 0E { 45 78 d3 99 fb 03 d7 e4 }} Mediatech
S: { 00 30 0C { 36 EB 6C FD 43 FC 6B 8F }} Rai TV
S: { 00 30 0D { 1C 5C 76 D6 FD 99 5E D4 }} Rai TV
S: { 00 30 0E { 57 32 7d c2 a8 62 b1 fb }} Rai TV
```

1 column – S: system seca

2 column – Provider ID and key number. Before Provider ID and key number must be “ { “ character.

3 column – key value. Before this key value must be “ { “ character, after key value must be 2x “ } “ character.

For Via file



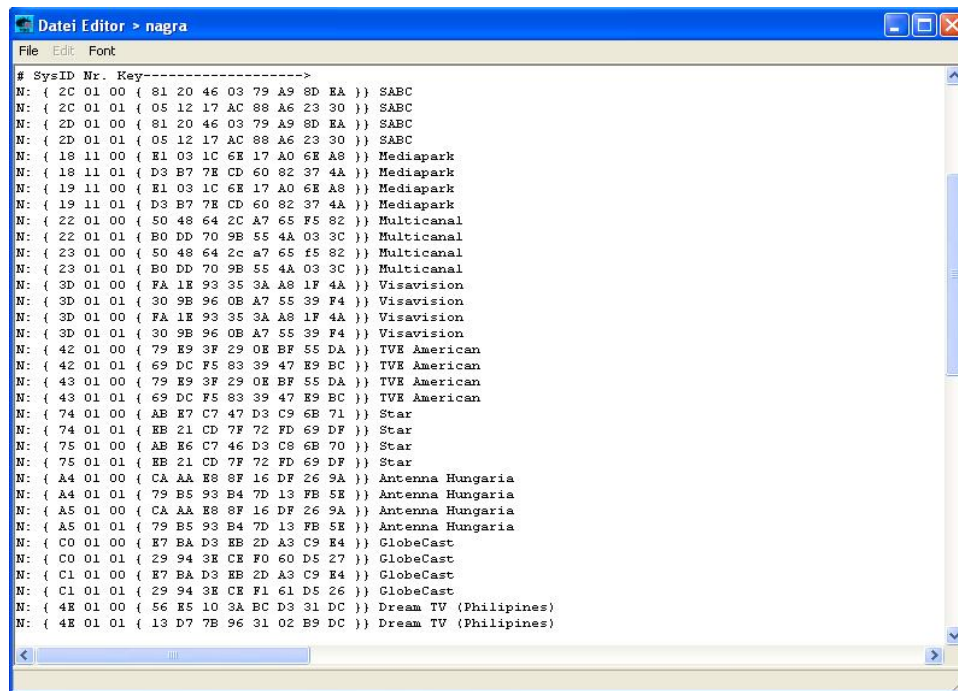
```
File Edit Font
V: { 00 78 00 08 { 5b 14 1e 38 9c 46 24 5f }}
V: { 00 78 00 09 { 60 6C 85 DA 02 41 90 61 }}
V: { 00 78 00 0a { 71 15 CE 2E F8 36 42 20 }}
V: { 00 7C 00 03 { E5 FC 94 44 F1 E2 23 1F }}
V: { 00 7C 00 08 { af aa 50 ac bb d8 26 3b }}
V: { 00 7C 00 09 { 20 15 E1 76 3F E9 ED 27 }}
V: { 00 7C 00 13 { 29 E9 97 78 8C 6B 64 41 }}
V: { 00 7C 00 0a { 1A A9 57 22 DA 22 22 AA }}
V: { 00 7C 00 0b { 4F C0 61 86 E4 8C 35 7C }}
V: { 00 7C 00 0c { 91 4e 7e 2d d6 aa a1 2d }}
V: { 00 7C 00 0d { 12 4b 6c 81 86 1e 02 b3 }}
V: { 00 7C 00 0e { CE 2F 7E BA 0A A4 DD 51 }}
V: { 00 80 00 08 { 8b e3 aa 25 9e 56 38 33 }}
V: { 00 80 00 09 { 88 50 68 5a bd 6b d2 97 }}
V: { 00 84 00 08 { 3c 42 d4 c8 c0 a1 1b 9c }}
V: { 00 84 00 09 { 46 42 e2 96 3b 94 98 64 }}
V: { 00 84 00 0a { 19 bd a5 c7 54 0f 9c 97 }}
V: { 00 9C 00 08 { 2b 5a 05 03 f8 43 23 54 }}
V: { 00 9C 00 09 { 04 01 EA 91 15 B3 87 E1 }}
V: { 00 9C 00 0a { 7F E1 12 6A 70 14 BC 3F }}
V: { 00 9C 00 0b { 3A 5B E2 D3 DA 37 71 FE }}
V: { 00 9C 00 0c { 37 EA 1A 0C 29 A6 32 27 }}
V: { 00 9C 00 0d { 90 9B 72 08 1E 91 5E CD }}
V: { 00 9C 00 0e { DF 99 D3 79 EF 1C 8C C5 }}
V: { 00 9C 00 0f { 65 5e 48 f7 72 53 f7 29 }}
V: { 00 A0 00 08 { 69 26 ca 06 e0 fc de 39 }}
V: { 00 A0 00 09 { 88 a5 b4 15 42 85 bd d7 }}
V: { 00 A0 00 0a { 45 c0 1b 14 97 12 d6 65 }}
V: { 00 B0 00 08 { 98 34 03 60 02 33 73 60 }}
V: { 00 B0 00 09 { 00 06 E3 8D 7E C8 EC 94 }}
V: { 00 B0 00 0a { 00 00 00 00 00 00 00 00 }}
V: { 00 B0 00 0b { 4E 95 54 9C E8 B6 A1 57 }}
V: { 00 B0 00 0c { 0c 4f c5 43 69 90 fb 8a }}
V: { 00 B0 00 0d { 00 06 e3 8d 7e c8 ec 94 }}
V: { 00 B0 00 0e { 00 06 e3 8d 7e c8 ec 94 }}
```

1 column – V: system viaccess

2 column – Provider ID and key number. Before Provider ID and key number must be “ { “ character.

3 column – key value. Before this key value must be “ { “ character, after key value must be 2x “ } “ character.

For nagra file



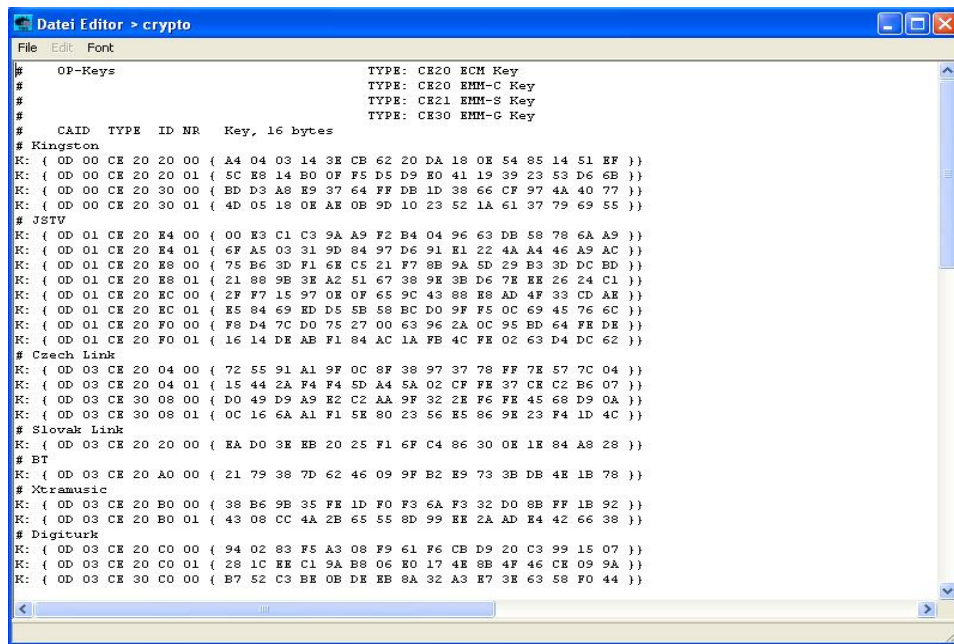
```
# SysID Nr. Key----->
N: { 2C 01 00 { 81 20 46 03 79 A9 8D EA }} SABC
N: { 2C 01 01 { 05 12 17 AC 88 A6 23 30 }} SABC
N: { 2D 01 00 { 81 20 46 03 79 A9 8D EA }} SABC
N: { 2D 01 01 { 05 12 17 AC 88 A6 23 30 }} SABC
N: { 18 11 00 { E1 03 1C 6E 17 A0 6E A8 }} Mediapark
N: { 18 11 01 { D3 B7 7E CD 60 82 37 4A }} Mediapark
N: { 19 11 00 { E1 03 1C 6E 17 A0 6E A8 }} Mediapark
N: { 19 11 01 { D3 B7 7E CD 60 82 37 4A }} Mediapark
N: { 22 01 00 { 50 48 64 2C A7 65 F5 82 }} Multicanal
N: { 22 01 01 { B0 DD 70 9B 55 4A 03 3C }} Multicanal
N: { 23 01 00 { 50 48 64 2C A7 65 F5 82 }} Multicanal
N: { 23 01 01 { B0 DD 70 9B 55 4A 03 3C }} Multicanal
N: { 3D 01 00 { FA 1E 93 35 3A A8 1F 4A }} Visavision
N: { 3D 01 01 { 30 9B 96 0B A7 55 39 F4 }} Visavision
N: { 3D 01 00 { FA 1E 93 35 3A A8 1F 4A }} Visavision
N: { 3D 01 01 { 30 9B 96 0B A7 55 39 F4 }} Visavision
N: { 42 01 00 { 79 E9 3F 29 0E BF 55 DA }} TVE American
N: { 42 01 01 { 69 DC F5 83 39 47 E9 EC }} TVE American
N: { 43 01 00 { 79 E9 3F 29 0E BF 55 DA }} TVE American
N: { 43 01 01 { 69 DC F5 83 39 47 E9 EC }} TVE American
N: { 74 01 00 { AE E7 C7 47 D3 C9 6B 71 }} Star
N: { 74 01 01 { EB 21 CD 7F 72 FD 69 DF }} Star
N: { 75 01 00 { AE E6 C7 46 D3 C8 6B 70 }} Star
N: { 75 01 01 { EB 21 CD 7F 72 FD 69 DF }} Star
N: { A4 01 00 { CA AA E8 8F 16 DF 26 9A }} Antenna Hungaria
N: { A4 01 01 { 79 B5 93 B4 7D 13 FE 5E }} Antenna Hungaria
N: { A5 01 00 { CA AA E8 8F 16 DF 26 9A }} Antenna Hungaria
N: { A5 01 01 { 79 B5 93 B4 7D 13 FE 5E }} Antenna Hungaria
N: { C0 01 00 { E7 EA D3 EE 2D A3 C9 E4 }} GlobeCast
N: { C0 01 01 { 29 94 3E CE F0 60 D5 27 }} GlobeCast
N: { C1 01 00 { E7 EA D3 EE 2D A3 C9 E4 }} GlobeCast
N: { C1 01 01 { 29 94 3E CE F1 61 D5 26 }} GlobeCast
N: { 4E 01 00 { 56 E5 10 3A EC D3 31 DC }} Dream TV (Philippines)
N: { 4E 01 01 { 13 D7 7B 96 31 02 B9 DC }} Dream TV (Philippines)
```

1 column – N: system nagra

2 column – Provider ID and key number. Before Provider ID and key number must be “ { “ character.

3 column – key value. Before this key value must be “ { “ character, after key value must be 2x “ } “ character.

For crypto file



```
# OP-Keys                                     TYPE: CE20 ECM Key
#                                               TYPE: CE20 EHM-C Key
#                                               TYPE: CE21 EHM-S Key
#                                               TYPE: CE30 EHM-G Key
# CAID TYPE ID NR Key, 16 bytes
# Kingston
K: { 0D 00 CE 20 20 00 { A4 04 03 14 3E CB 62 20 DA 18 0E 54 85 14 51 EF }}
K: { 0D 00 CE 20 20 01 { 5C E8 14 B0 0F F5 D5 D9 E0 41 19 39 23 53 D6 6B }}
K: { 0D 00 CE 20 30 00 { BD D3 A8 E9 37 64 FF DB 1D 38 66 CF 97 4A 40 77 }}
K: { 0D 00 CE 20 30 01 { 4D 05 18 0E AE 0B 9D 10 23 52 1A 61 37 79 69 55 }}
# JSTV
K: { 0D 01 CE 20 E4 00 { 00 E3 C1 C3 9A A9 F2 B4 04 96 63 DB 58 78 6A A9 }}
K: { 0D 01 CE 20 E4 01 { 6F A5 03 31 9D 84 97 D6 91 E1 22 4A A4 46 A9 AC }}
K: { 0D 01 CE 20 E8 00 { 75 B6 3D F1 6E C5 21 F7 8B 9A 5D 29 B3 3D DC BD }}
K: { 0D 01 CE 20 E8 01 { 21 88 9B 3E A2 51 67 38 9E 3B D6 7E EE 26 24 C1 }}
K: { 0D 01 CE 20 EC 00 { 2F F7 15 97 0E 0F 65 9C 43 88 E8 AD 4F 33 CD AE }}
K: { 0D 01 CE 20 EC 01 { E5 84 69 ED D5 5B 58 BC D0 9F F5 0C 69 45 76 6C }}
K: { 0D 01 CE 20 F0 00 { F8 D4 7C D0 75 27 00 63 96 2A 0C 95 BD 64 FE DE }}
K: { 0D 01 CE 20 F0 01 { 16 14 DE AB F1 84 AC 1A FB 4C FE 02 63 D4 DC 62 }}
# Czech Link
K: { 0D 03 CE 20 04 00 { 72 55 91 A1 9F 0C 8F 38 97 37 78 FF 7E 57 7C 04 }}
K: { 0D 03 CE 20 04 01 { 15 44 2A F4 F4 5D A4 5A 02 CF FE 37 CE C2 B6 07 }}
K: { 0D 03 CE 30 08 00 { D0 49 D9 A9 E2 C2 AA 9F 32 2E F6 FE 45 68 D9 0A }}
K: { 0D 03 CE 30 08 01 { 0C 16 6A A1 F1 5E 80 23 56 E5 86 9E 23 F4 1D 4C }}
# Slovak Link
K: { 0D 03 CE 20 20 00 { EA D0 3E EB 20 25 F1 6F C4 86 30 0E 1E 84 A8 28 }}
# BT
K: { 0D 03 CE 20 A0 00 { 21 79 38 7D 62 46 09 9F B2 E9 73 3B DB 4E 1B 78 }}
# Xtramusik
K: { 0D 03 CE 20 B0 00 { 38 B6 9B 35 FE 1D F0 F3 6A F3 32 D0 8B FF 1B 92 }}
K: { 0D 03 CE 20 B0 01 { 43 08 CC 4A 2B 65 55 8D 99 EE 2A AD E4 42 66 38 }}
# Digiturk
K: { 0D 03 CE 20 C0 00 { 94 02 83 F5 A3 08 F9 61 F6 CB D9 20 C3 99 15 07 }}
K: { 0D 03 CE 20 C0 01 { 28 1C EE C1 9A B8 06 B0 17 4E 8B 4F 46 CE 09 9A }}
K: { 0D 03 CE 30 C0 00 { B7 52 C3 BE 0B DE EB 8A 32 A3 E7 3E 63 58 F0 44 }}
```

1 column – K: crypto system

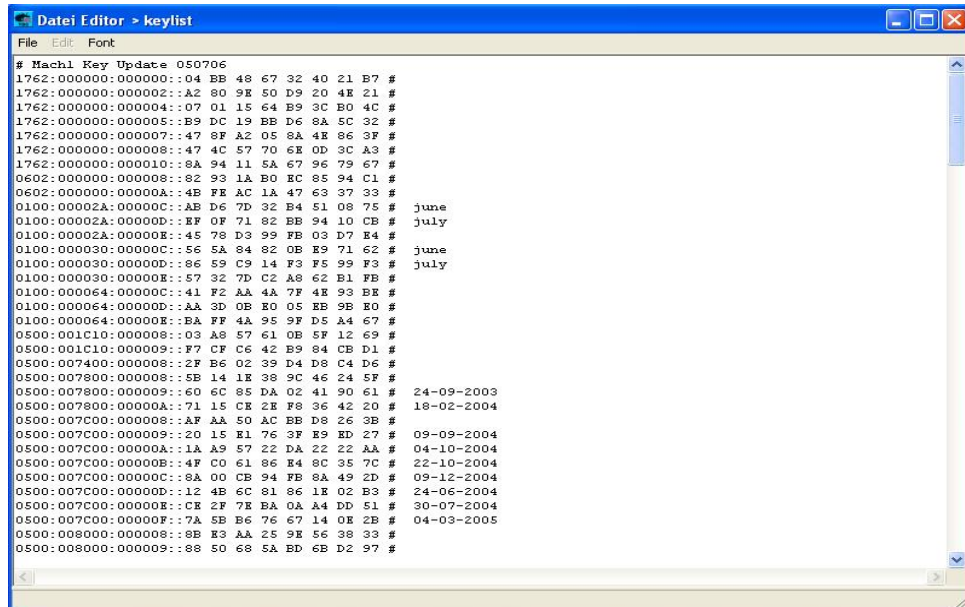
2 column – Provider ID and key number. Before Provider ID and key number must be “ { “ character.

3 column – key value. Before this key value must be “ { “ character, after key value must be 2x “ } “ character.

8. Edit for Newcamd

According with table above, approach to edit **keylist** and **tpscript** file. Start editing and save & exit change is the same, how for **softcam.key**.

For keylist file

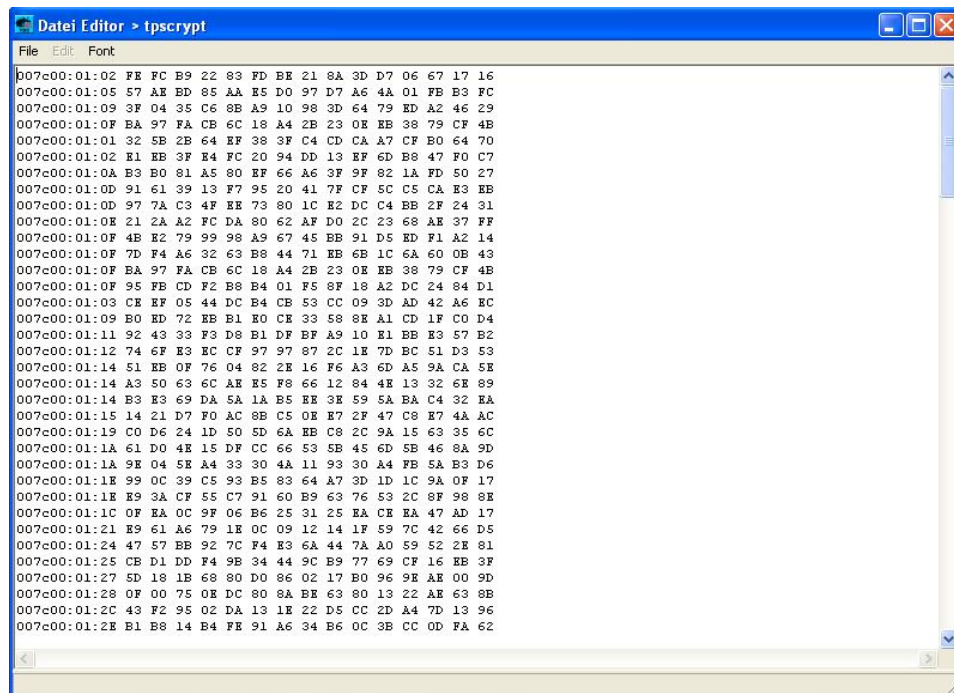


```
# Mach1 Key Update 050706
1762:000000:000000:04 BB 48 67 32 40 21 B7 #
1762:000000:000002:A2 80 9E 50 D9 20 4E 21 #
1762:000000:000004:07 01 15 64 B9 3C B0 4C #
1762:000000:000005:B9 DC 19 BB D6 8A 5C 32 #
1762:000000:000007:47 8F A2 05 8A 4E 86 3F #
1762:000000:000008:47 4C 57 70 6E OD 3C A3 #
1762:000000:000010:8A 94 11 5A 67 96 79 67 #
0602:000000:000008:82 93 1A B0 EC 85 94 C1 #
0602:000000:00000A:4B FE AC 1A 47 63 37 33 #
0100:00002A:00000C:AB D6 7D 32 B4 51 08 75 # june
0100:00002A:00000D:EF 0F 71 82 BB 94 10 CB # july
0100:00002A:00000E:45 78 D3 99 FB 03 D7 E4 #
0100:000030:00000C:56 5A 84 82 0B E9 71 62 # june
0100:000030:00000D:86 59 C9 14 F3 F5 99 F3 # july
0100:000030:00000E:57 32 7D C2 A8 62 B1 FB #
0100:000064:00000C:41 F2 AA 4A 7F 4E 93 BE #
0100:000064:00000D:AA 3D 0B 0E 05 EB 9B E0 #
0100:000064:00000E:BA FF 4A 95 9F D5 A4 67 #
0500:001C10:000008:03 A8 57 61 0B 5F 12 69 #
0500:001C10:000009:F7 CF C6 42 B9 84 CB D1 #
0500:007400:000008:2F B6 02 39 D4 D8 C4 D6 #
0500:007800:000008:5B 14 1E 38 9C 46 24 5F #
0500:007800:000009:60 6C 85 DA 02 41 90 61 # 24-09-2003
0500:007800:00000A:71 15 CE 2E F8 36 42 20 # 18-02-2004
0500:007C00:000008:AF AA 50 AC BB D8 26 3B #
0500:007C00:000009:20 15 E1 76 3F E9 ED 27 # 09-09-2004
0500:007C00:00000A:1A A9 57 22 DA 22 22 AA # 04-10-2004
0500:007C00:00000B:4F C0 61 86 E4 8C 35 7C # 22-10-2004
0500:007C00:00000C:8A 00 CB 94 FB 8A 49 2D # 09-12-2004
0500:007C00:00000D:12 4B 6C 81 86 1E 02 E3 # 24-06-2004
0500:007C00:00000E:CE 2F 7E BA 0A A4 D0 51 # 30-07-2004
0500:007C00:00000F:7A 5B B6 76 67 14 0E 2B # 04-03-2005
0500:008000:000008:8B E3 AA 25 9E 56 38 33 #
0500:008000:000009:88 50 68 5A BD 6B D2 97 #
```

- 1 column – system ID
- 2 column – Provider number
- 3 column – key number
- 4 column – key

After 1 and 2 column must be “ : “ character, after 3 column must be twice “ : “ character. If you want add some information about entered or edited key, after 4 column press space and add “ # “ character.

For tpscript file

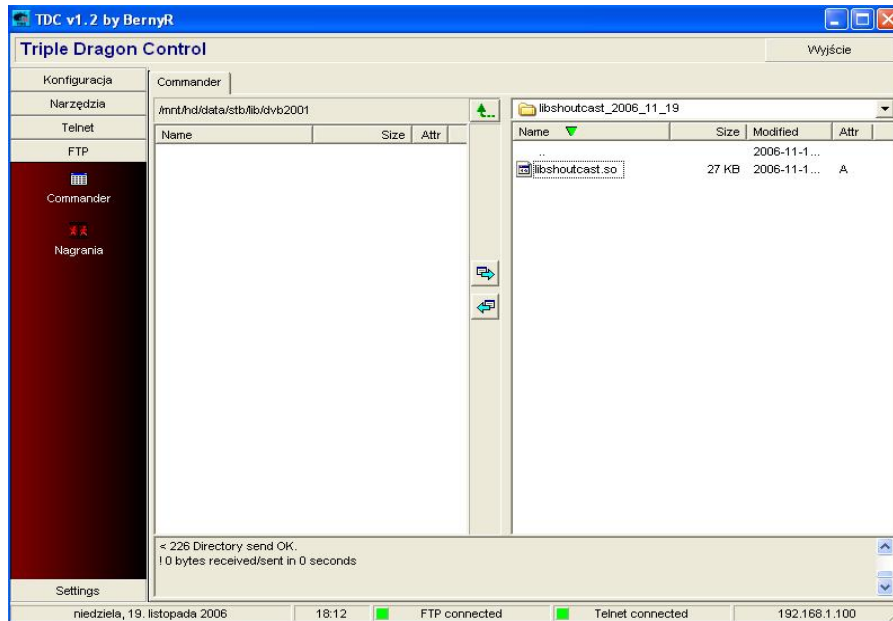


```
007c00:01:02 FE FC B9 22 83 FD BE 21 8A 3D D7 06 67 17 16
007c00:01:05 57 AE BD 85 AA E5 D0 97 D7 A6 4A 01 FE B3 FC
007c00:01:09 3F 04 35 C6 8B A9 10 98 3D 64 79 ED A2 46 29
007c00:01:0F BA 97 FA CB 6C 18 A4 2B 23 0E EB 38 79 CF 4B
007c00:01:01 32 5B 2B 64 EF 38 3F C4 CD CA A7 CF B0 64 70
007c00:01:02 E1 EB 3F E4 FC 20 94 DD 13 EF 6D B8 47 F0 C7
007c00:01:0A B3 B0 81 A5 80 EF 66 A6 3F 9F 82 1A FD 50 27
007c00:01:0D 91 61 39 13 F7 95 20 41 7F CF 5C C5 CA E3 EB
007c00:01:0D 97 7A C3 4F EE 73 80 1C E2 DC C4 BB 2F 24 31
007c00:01:0E 21 2A A2 FC DA 80 62 AF D0 2C 23 68 AE 37 FF
007c00:01:0F 4B E2 79 99 98 A9 67 45 BB 91 D5 ED F1 A2 14
007c00:01:0F 7D F4 A6 32 63 B8 44 71 EB 6B 1C 6A 60 0B 43
007c00:01:0F BA 97 FA CB 6C 18 A4 2B 23 0E EB 38 79 CF 4B
007c00:01:0F 95 FB CD F2 B8 B4 01 F5 8F 18 A2 DC 24 84 D1
007c00:01:03 CE EF 05 44 DC B4 CB 53 CC 09 3D AD 42 A6 EC
007c00:01:09 B0 ED 72 EB B1 E0 CE 33 58 8E A1 CD 1F C0 D4
007c00:01:11 92 43 33 F3 D8 B1 DF BF A9 10 E1 BB E3 57 B2
007c00:01:12 74 6F E3 EC CF 97 97 87 2C 1E 7D BC 51 D3 53
007c00:01:14 51 EB 0F 76 04 82 2E 16 F6 A3 6D A5 9A CA 5E
007c00:01:14 A3 50 63 6C AE E5 F8 66 12 84 4E 13 32 6E 89
007c00:01:14 B3 E3 69 DA 5A 1A B5 EE 3E 59 5A BA C4 32 EA
007c00:01:15 14 21 D7 F0 AC 8B C5 0E E7 2F 47 C8 E7 4A AC
007c00:01:19 C0 D6 24 1D 50 5D 6A EB C8 2C 9A 15 63 35 6C
007c00:01:1A 61 D0 4E 15 DF CC 66 53 5B 45 6D 5B 46 8A 9D
007c00:01:1A 9E 04 5E A4 33 30 4A 11 93 30 A4 FB 5A B3 D6
007c00:01:1E 99 0C 39 C5 93 B5 83 64 A7 3D 1D 1C 9A 0F 17
007c00:01:1E E9 3A CF 55 C7 91 60 B9 63 76 53 2C 8F 98 8E
007c00:01:1C 0F EA 0C 9F 06 B6 25 31 25 EA CE EA 47 AD 17
007c00:01:21 E9 61 A6 79 1E 0C 09 12 14 1F 59 7C 42 66 D5
007c00:01:24 47 57 BB 92 7C F4 E3 6A 44 7A A0 59 52 2E 81
007c00:01:25 CB D1 DD F4 9B 34 44 9C B9 77 69 CF 16 EE 3F
007c00:01:27 5D 18 1B 68 80 D0 86 02 17 B0 96 9E AE 00 9D
007c00:01:28 0F 00 75 0E DC 80 8A BE 63 80 13 22 AE 63 8B
007c00:01:2C 43 F2 95 02 DA 13 1E 22 D5 CC 2D A4 7D 13 96
007c00:01:2E B1 B8 14 B4 FE 91 A6 34 B6 0C 3B CC 0D FA 62
```

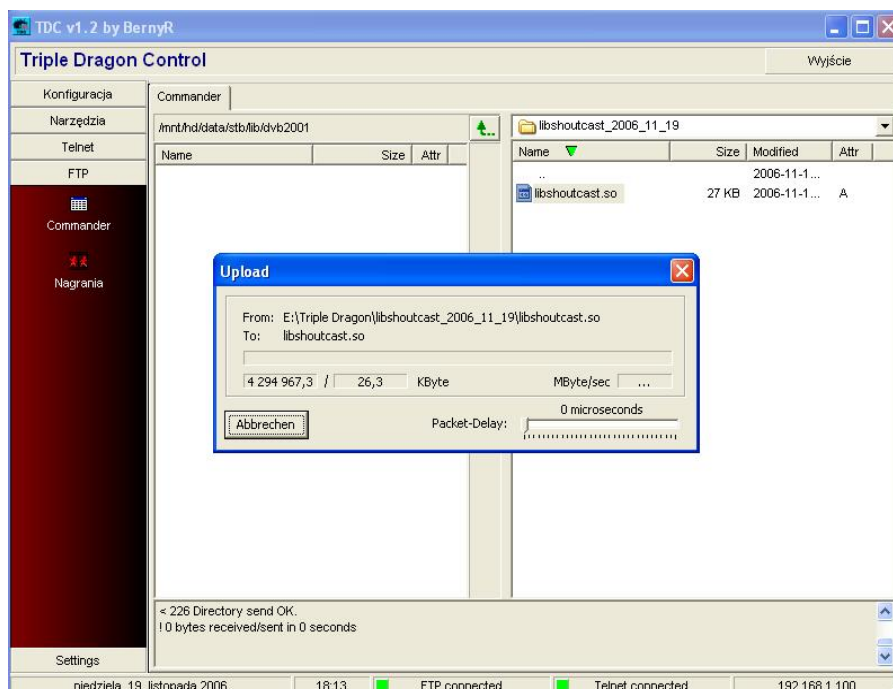
To add AES key, first write provider number then key number and on the end, enter key.
After 1 and 2 column enter “:” character.

Plugin installation via **FTP** (this description show how to install shoutcast player plugin, the same you can install other plugin as: pccontrol, mail client and etc.).

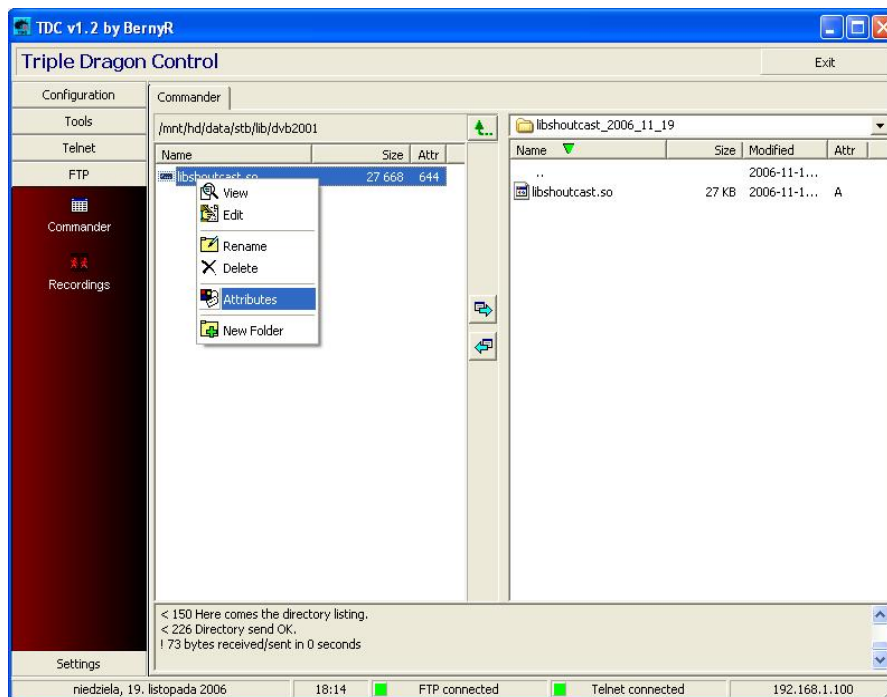
After pressing **left mouse** button on **FTP** bookmark go to: **/mnt/hd/data/stb/lib/dvb2001** directory.



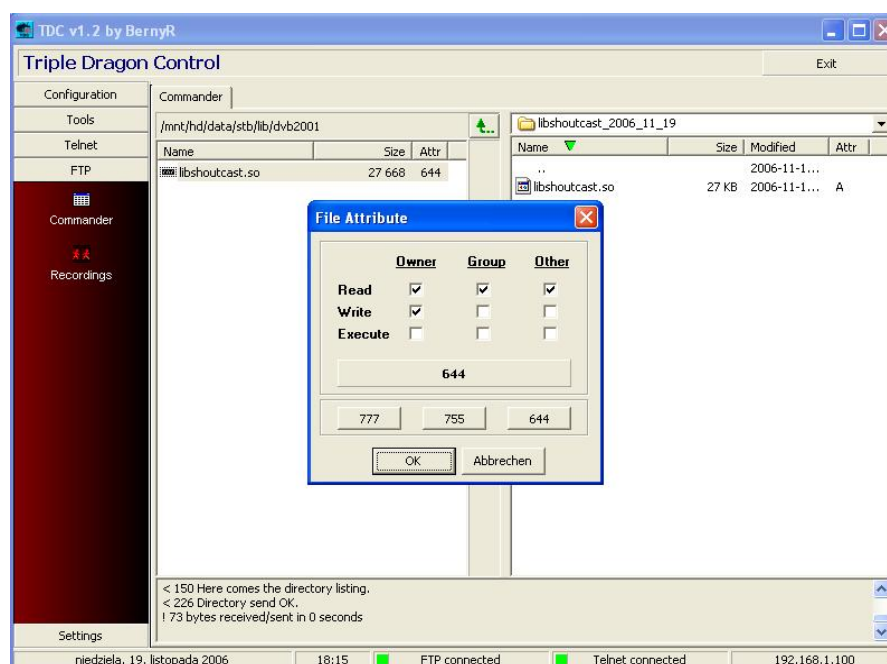
Select plugin, which you want to copy and press **green arrow left** button and uploading plugin from PC to TD should start.



Now press **right mouse** button on plugin, which you copy on hdd and select **Attributes** option.



Press **left mouse button** on **755** bookmark and **OK**.

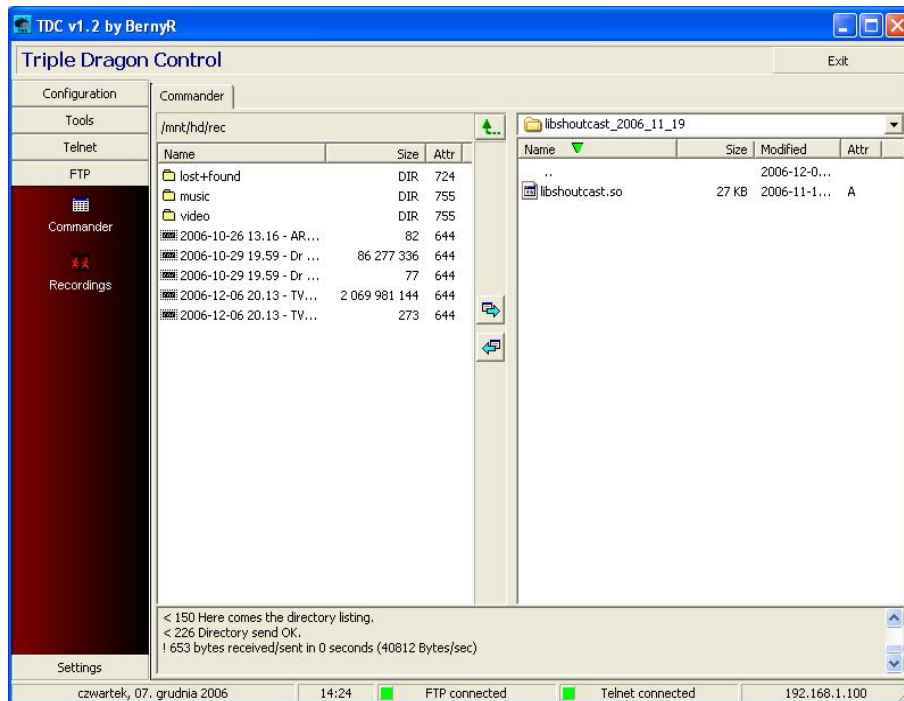


Now **restart box** and plugin should be installed in **Menu -> Extras**.

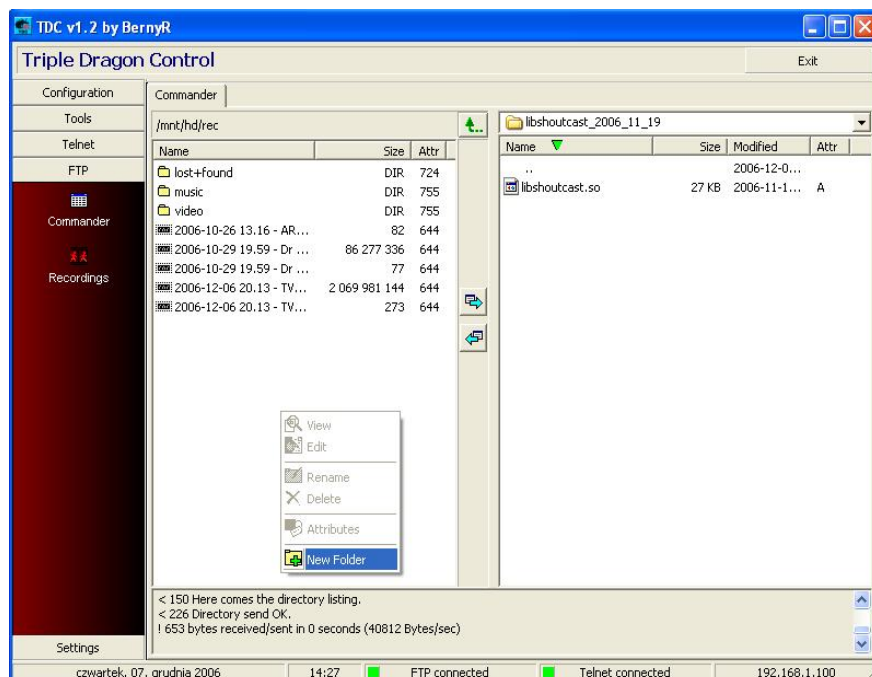
FTP protocol you can use to send **picture** files (for picture viewer plugin), **video** media files (for Video player plugin) or **mp3** files (for mp3 player plugin).

Creating **new** directory for example of name: **picture**:

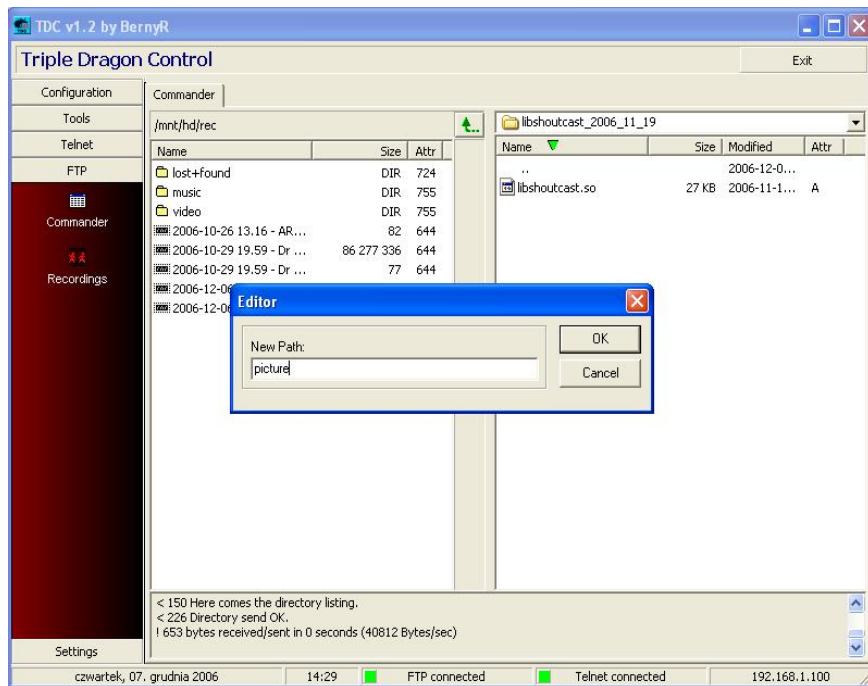
Go to **/mnt/hd/rec** directory



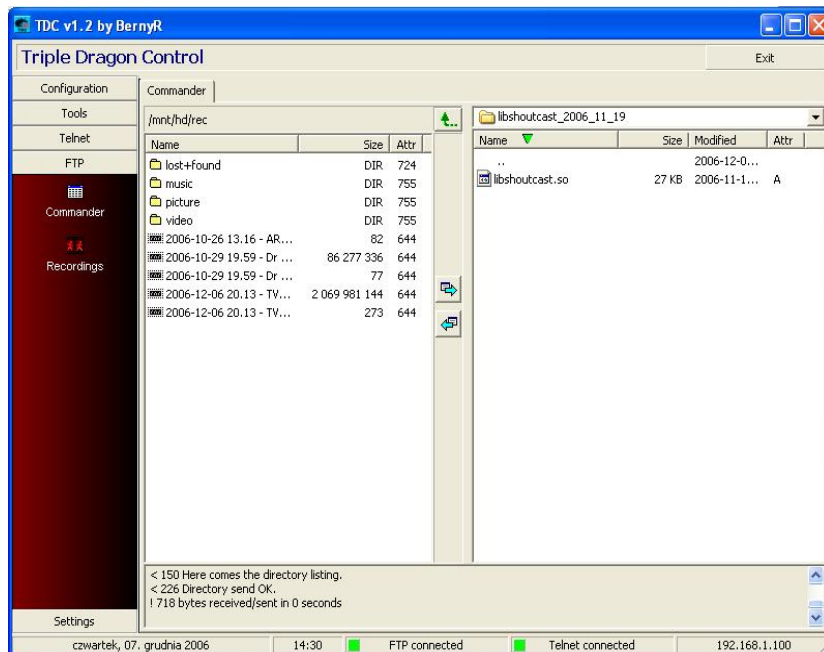
Press **right mouse** button on **white place** in left window and select **New folder** option.



Enter new folder **name** (in this example directory name is **picture**) and press **OK**.



Now new directory is created and you can send **picture file** (*.jpg) to this directory.

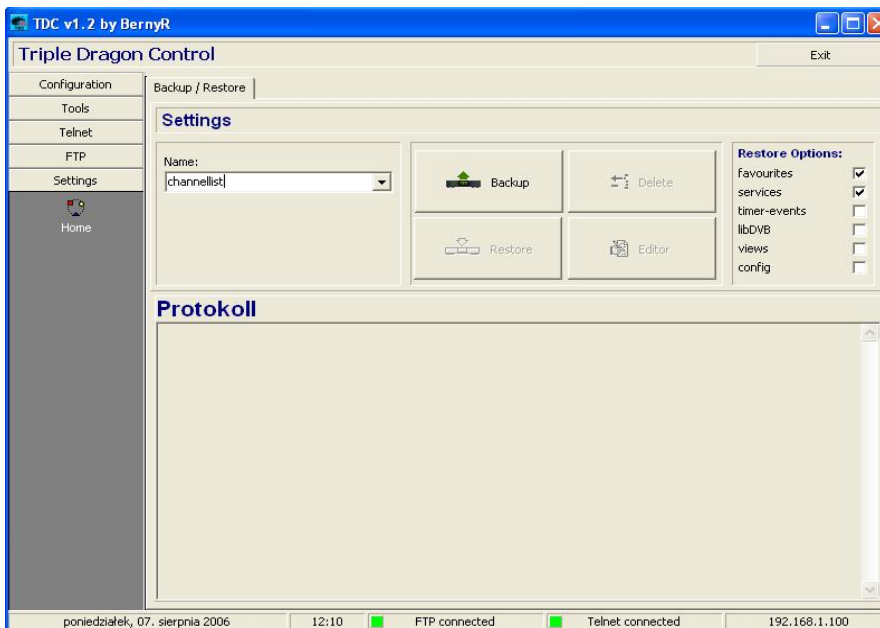
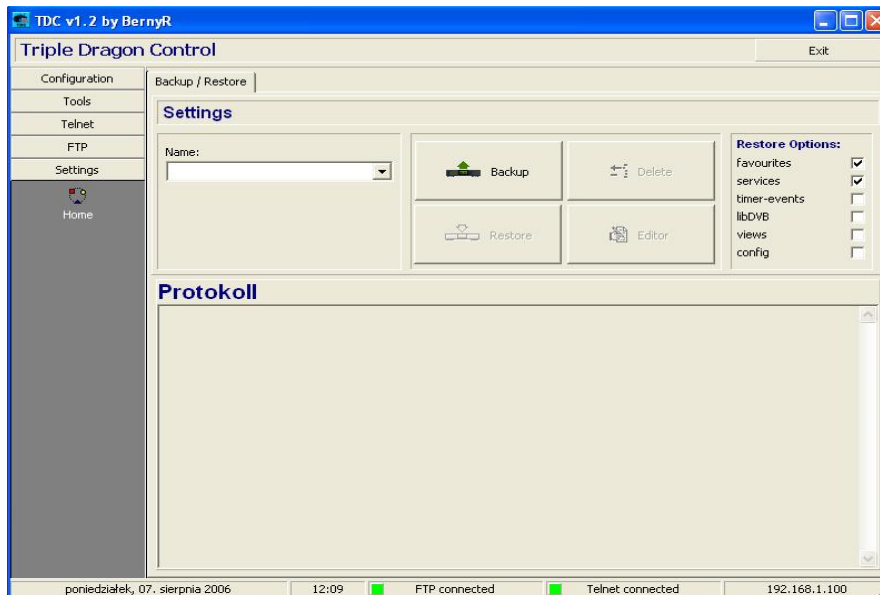


When picture file are sent go to **Menu -> Extra** and start **picture viewer** plugin. Select directory where you send picture files and start viewing. The same you can make with **mp3** files and **video media** files but to playing mp3 files use **mp3player** plugin, to start playing video media files use **Video player** plugin.

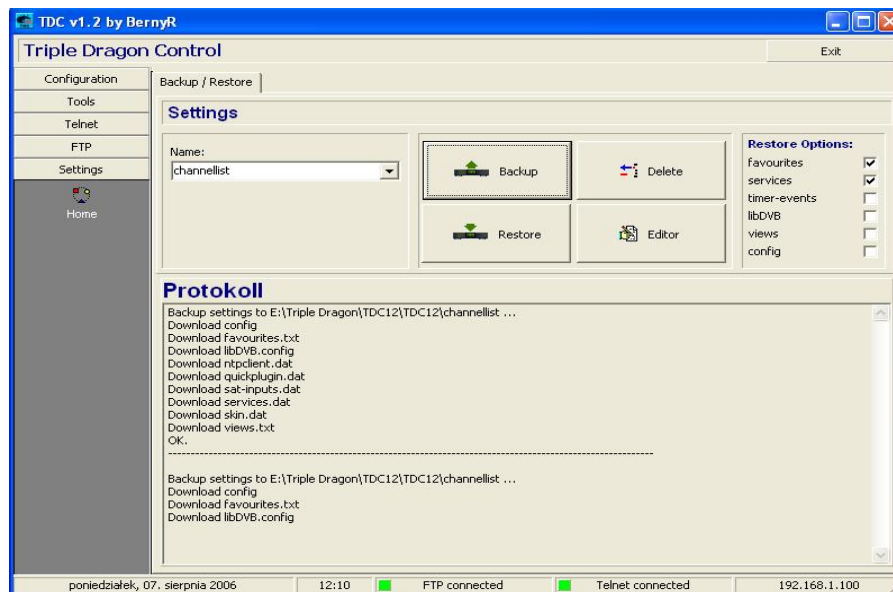
Channellist

Creating backup and editing channellist

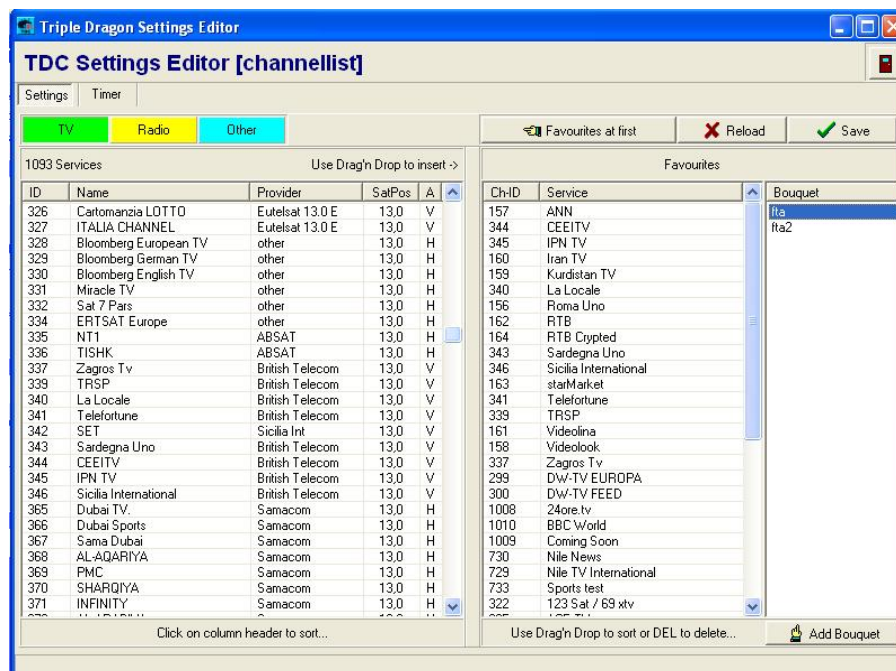
Go to **settings** bookmark, enter directory **name** in **Name:** place and press **Backup** button.



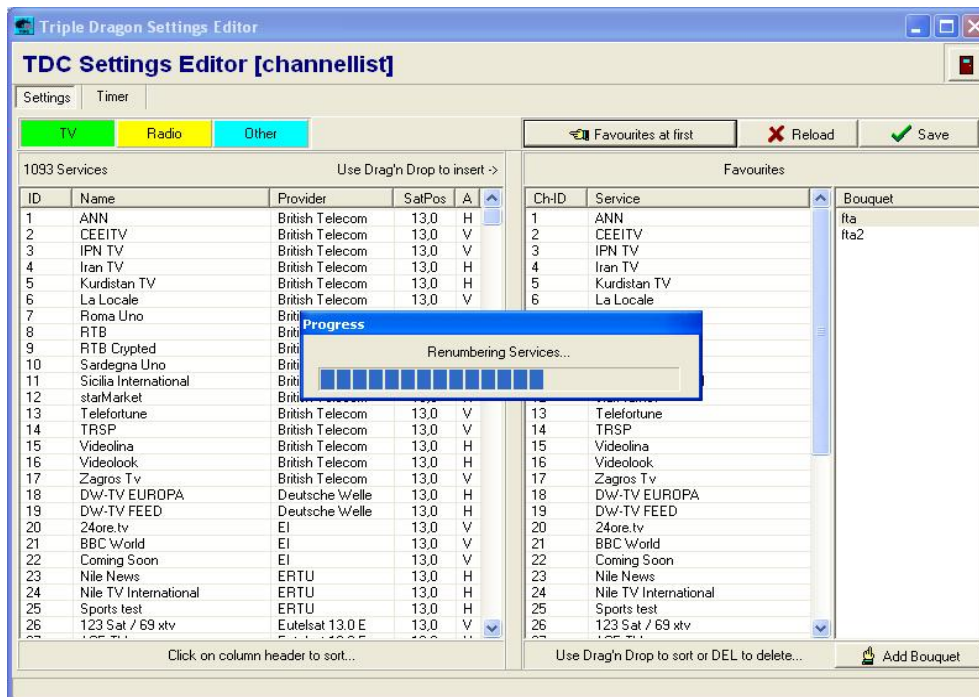
Now, **TDC** download channellist and configuration.



To start editing channellist, press **Editor** button and you see new window.

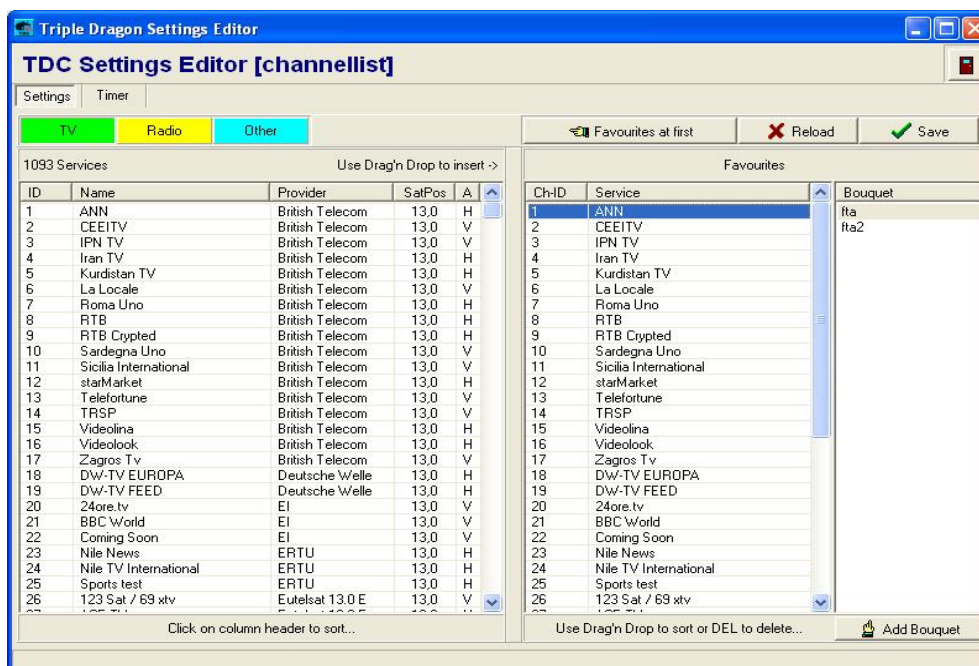


If you want have channel numbering the same as channel in favourites list, press **Favourites at first** button. Now editor start **rearrange services**.

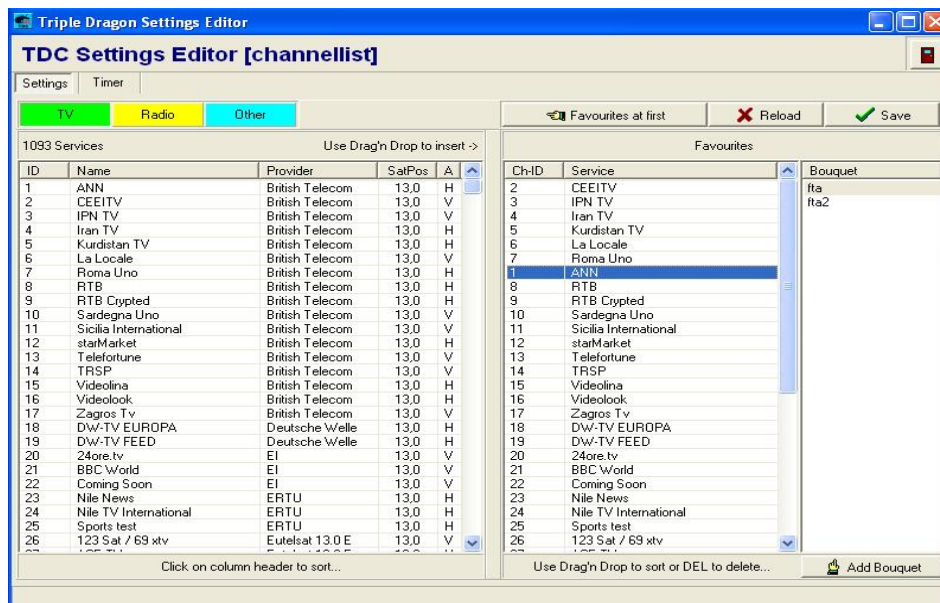


Changing channel position

Select channel, which you want change position and press **left mouse button**.

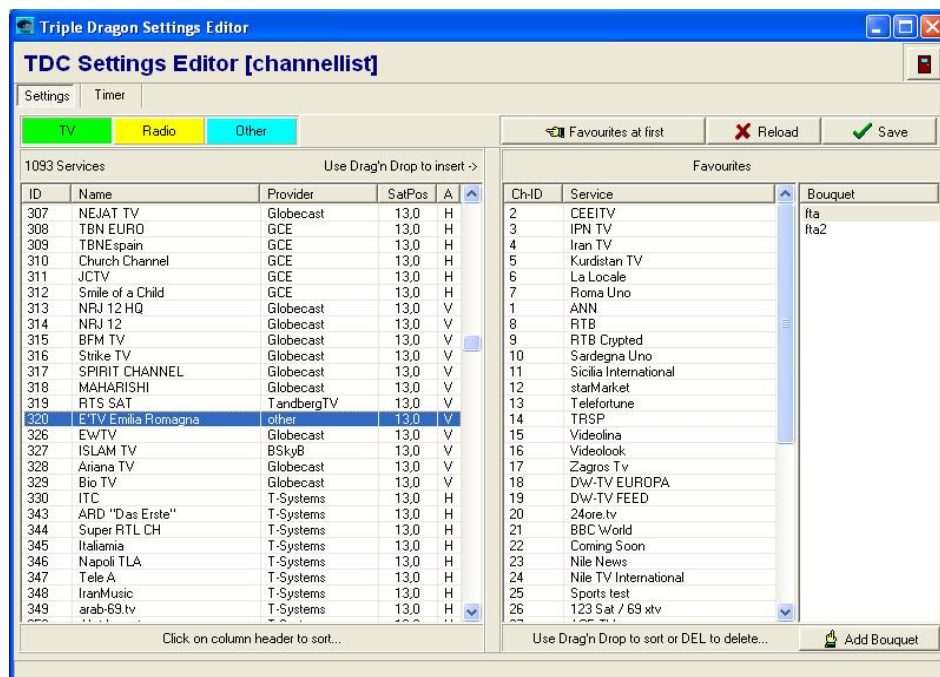


Now **hold** this button and **move** channel.

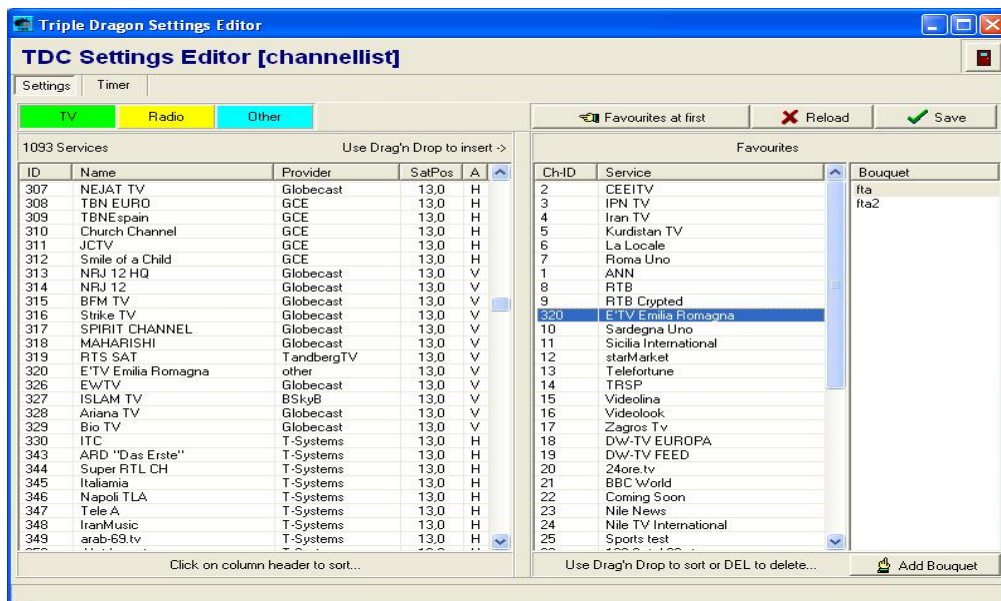


Add channel to Favourite list

Select channel on the **left side** editor window.

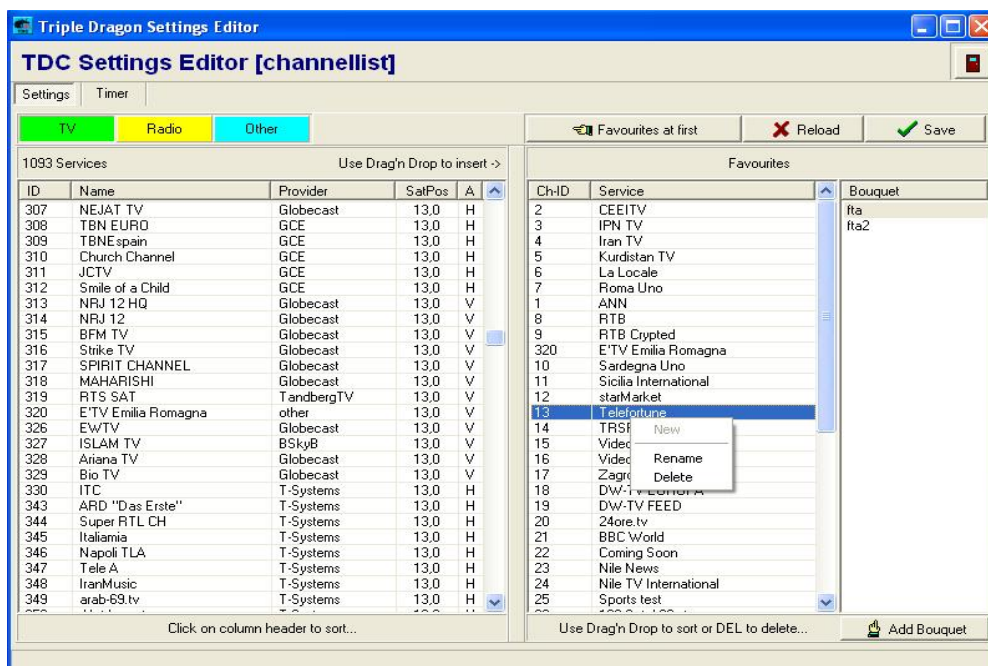


Press **left mouse button, hold** and move to **right window**.



Changing channel name.

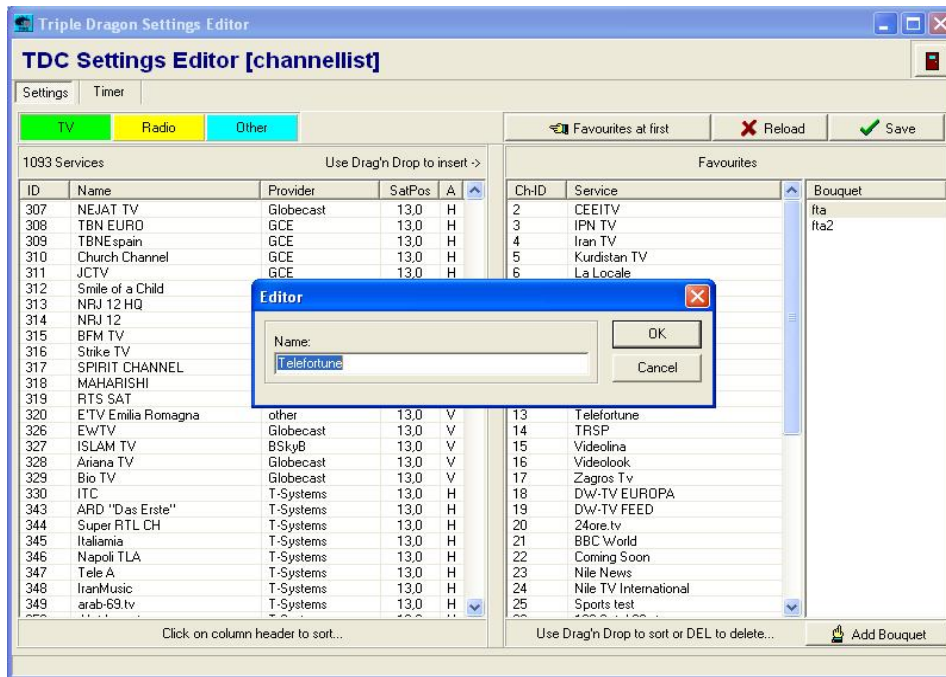
Select channel, which you want **change name** and press **right mouse** button. Now you see new **submenu**.



Delete option - deleting channel

Rename option – changing channel name

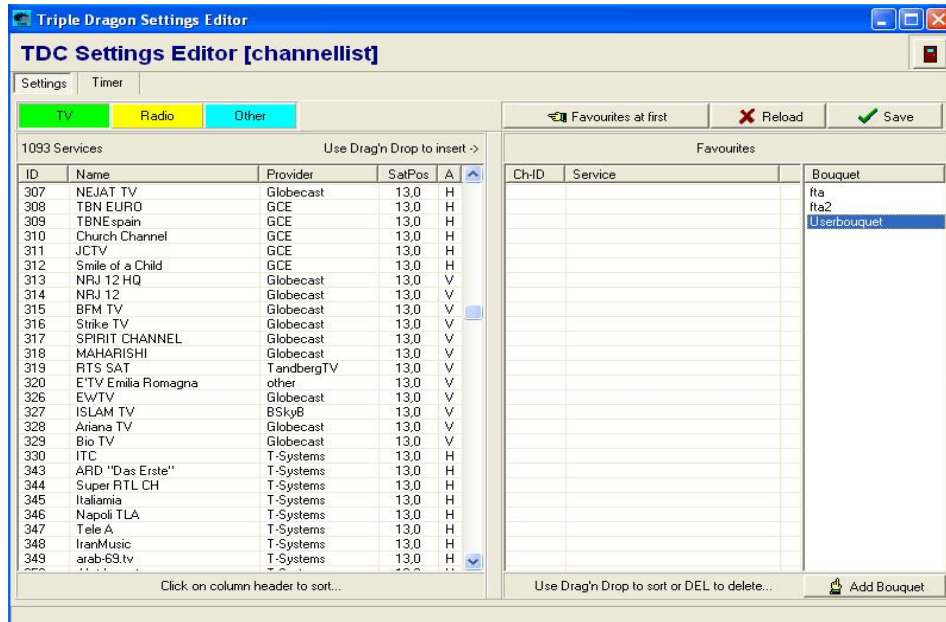
Press **left mouse** button on **Rename** option and enter new channel name.

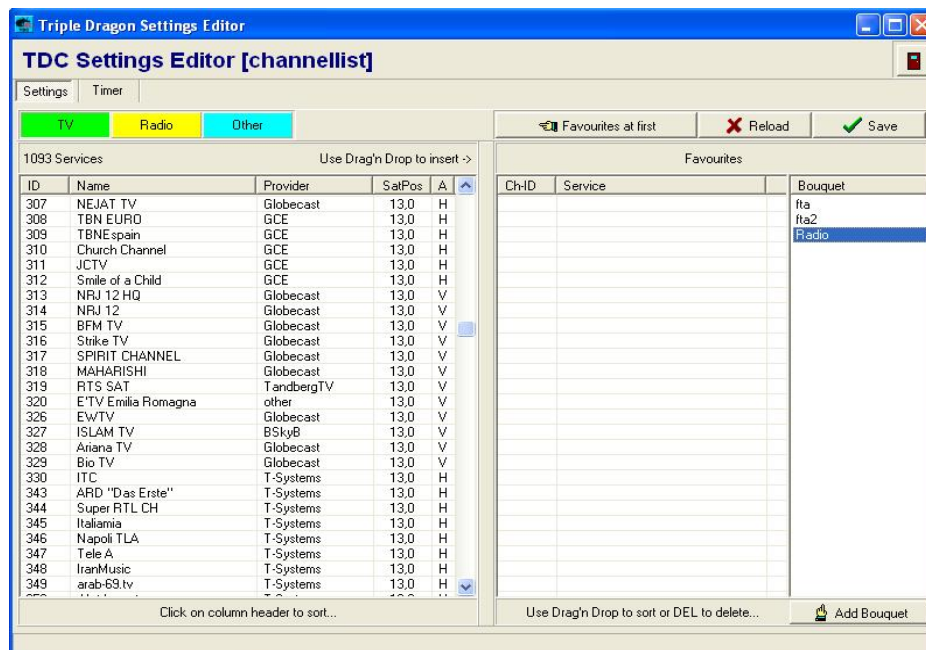


When new name is entered, press **OK**.

Create new bouquet

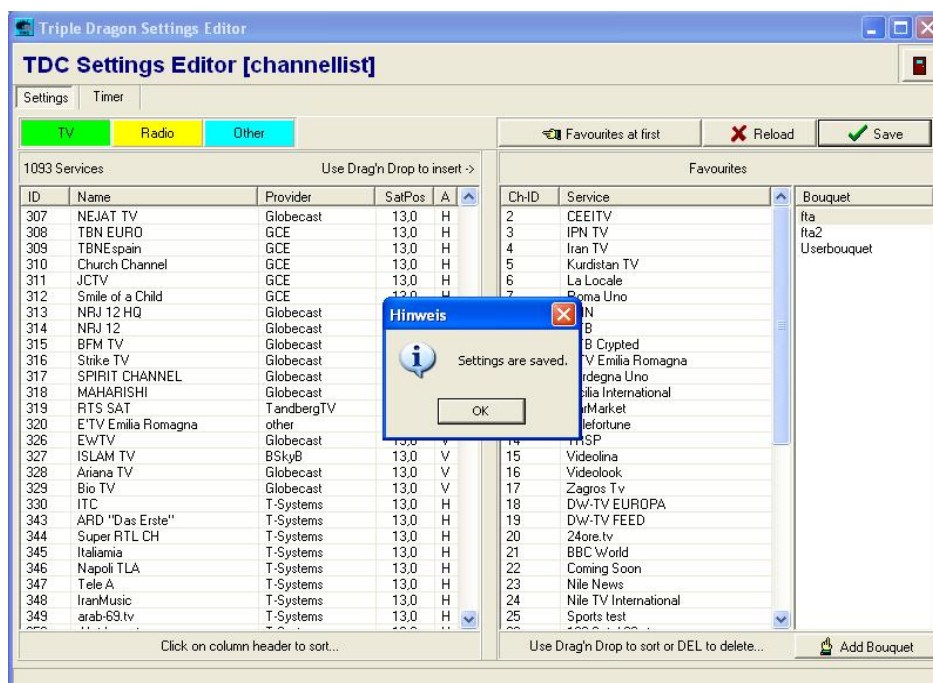
Press **Add Bouquet** button and enter name for new bouquet





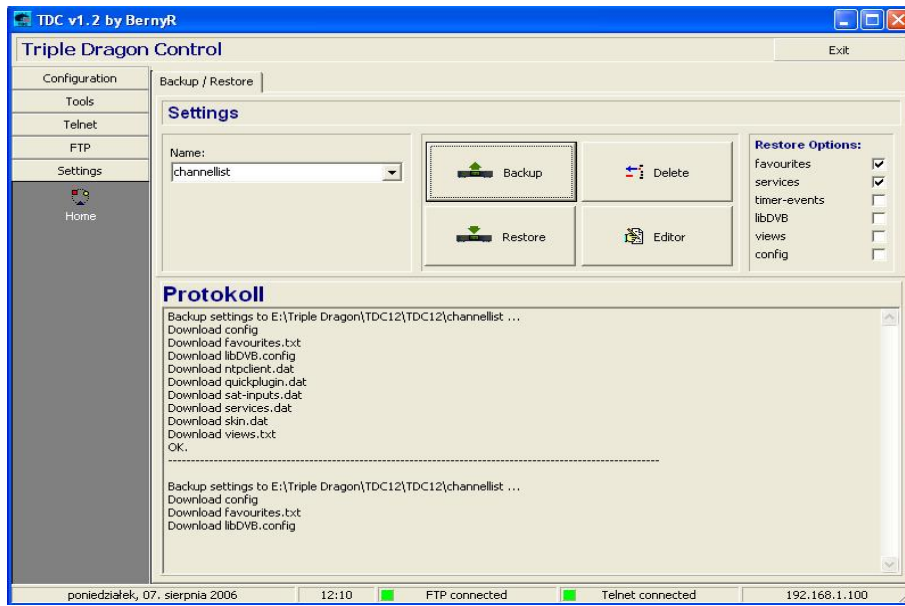
Now, new **bouquet** is created.

When all change are made, press **left mouse** button on the **Save** option.



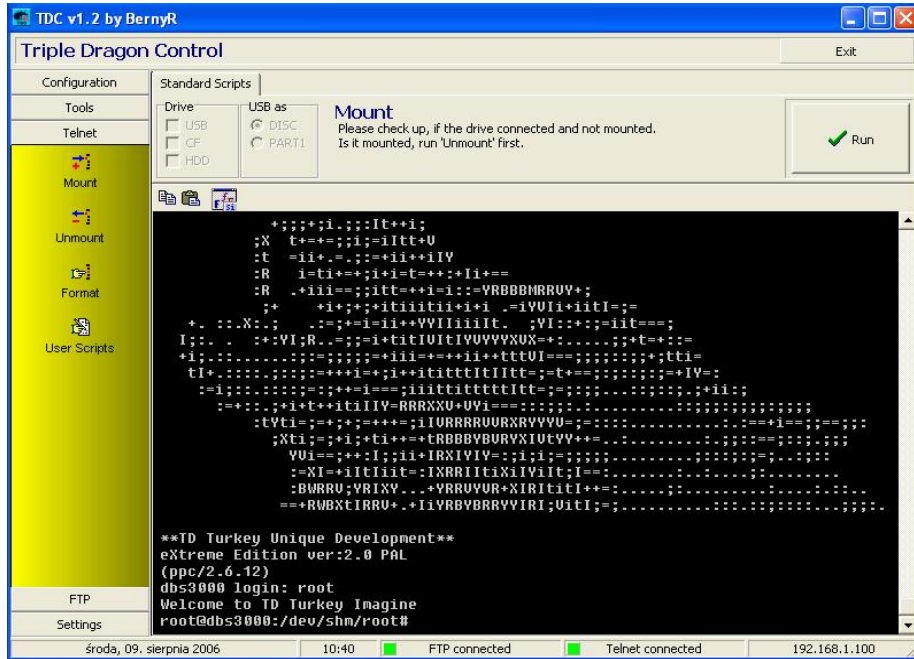
Now setting are saved and press **OK**.

To upload new channellist to TD, press **Restore** button and upload will be started.
If you want, restore menu settings too, only **mark** rest option in **Restore option**:



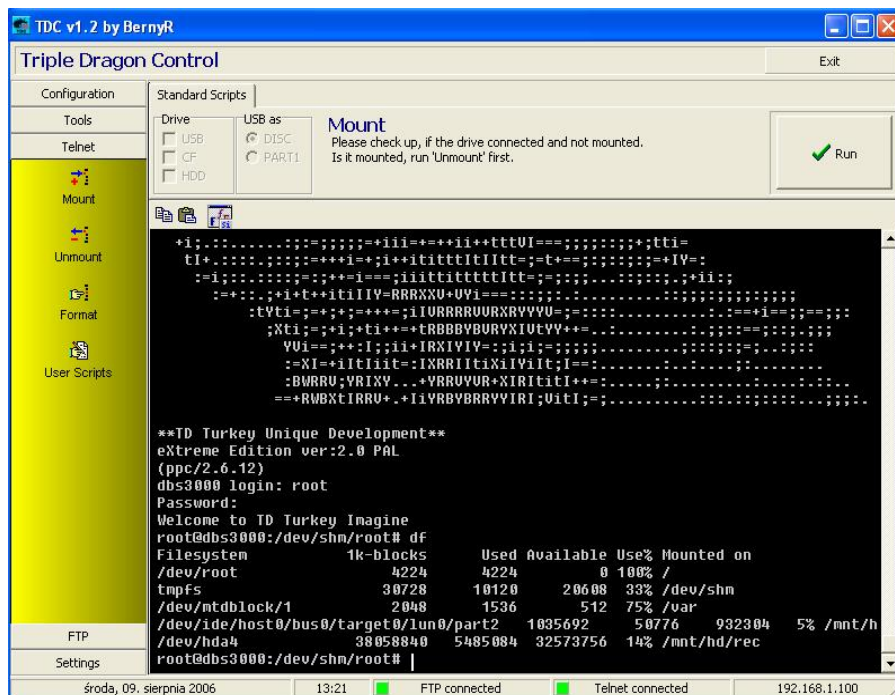
Telnet

To start fun with telnet, press **left mouse** button in TDC on **Telnet** bookmark. Now you see new window, where will be possibility enter linux command.



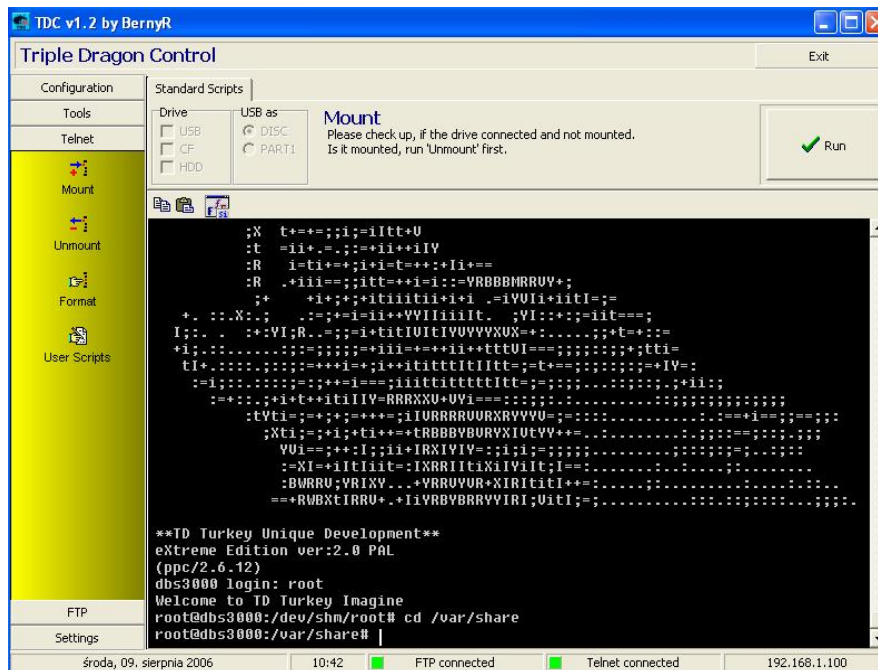
Command **df**

Enter **df** command and press **enter** button on keyboard. Now you see information about partition size.



Command **cd /<directory_name>**

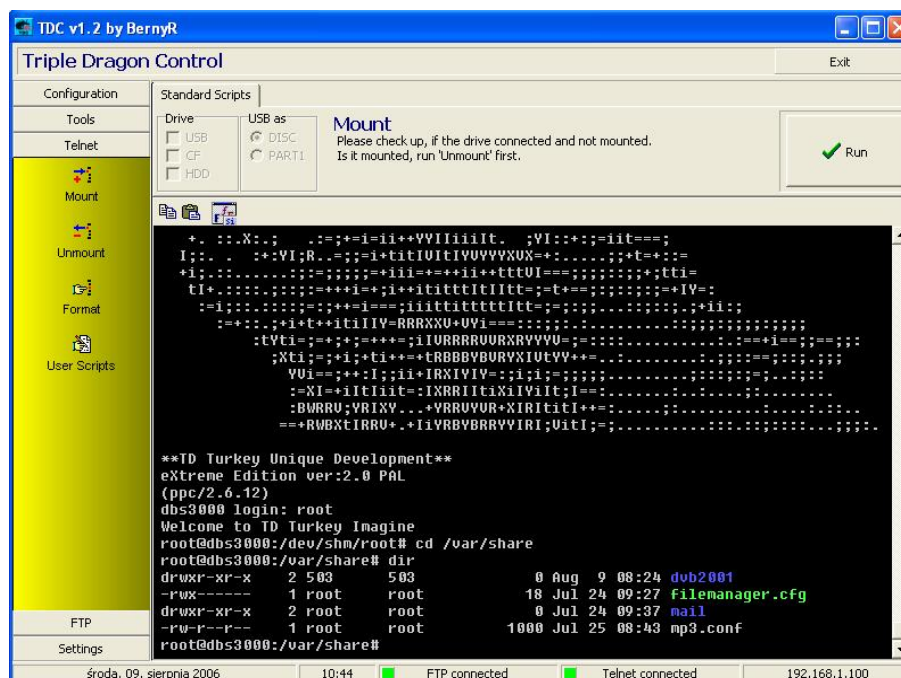
This command, get access to directory. For example: **cd /var/share**.



Now you are in **/var/share** directory.

Command **dir**

This command, check how files are in this directory.



Command: **rm** <directory_name> - deleting directory. Example: **rm test**, directory about name **test**, will be deleted. **Important is, to delete directory you must be in folder where this directory is.**

Command **mkdir** <directory_name> - create new directory. Example: **mkdir data**, directory **data**, will be created. **Important: if want create directory in /var/share, first you must enter command **cd /var/share** then command **mkdir data**.**

Command **cat** <file_name> - editing file. Example: **cat mp3.conf**

Command **rm** <file_name> - deleting file. Example **rm mp3.conf**

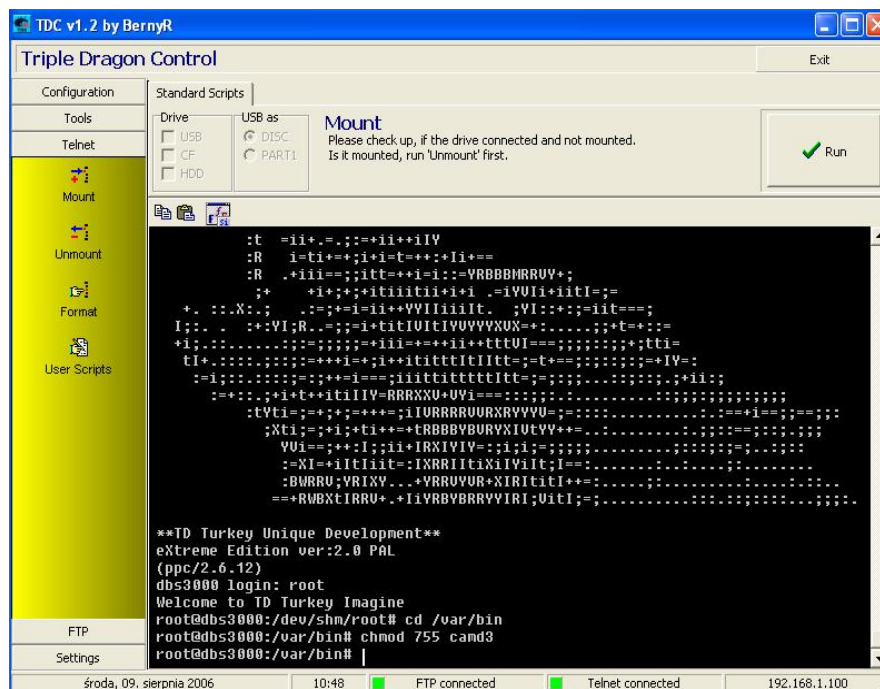
Important: For editing and deleting file, you must be in directory, where this file is.

Command **ls -a** – show hidden file

Command **touch** <file_name> - create new empty file

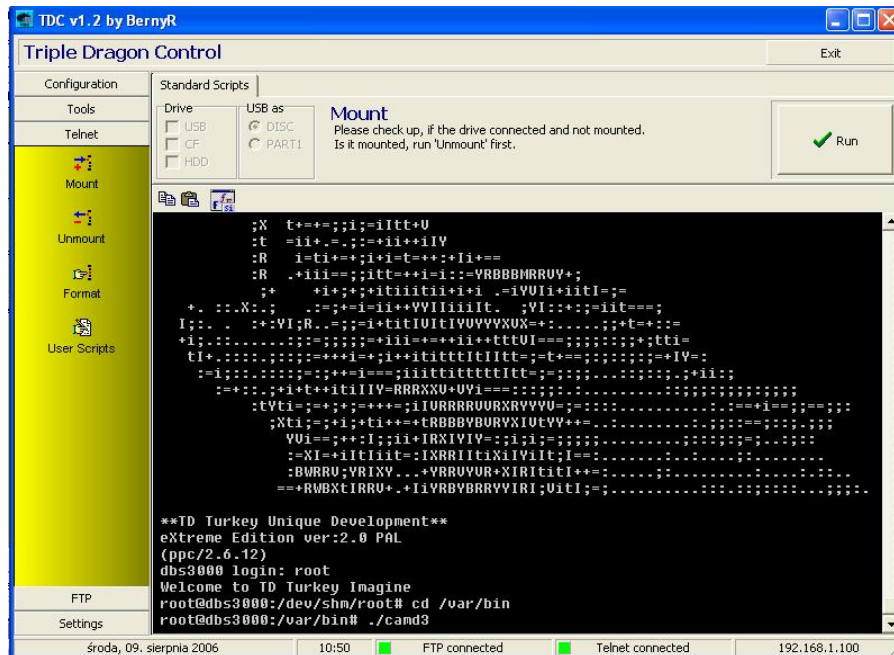
Command **chmod**

This command, can change attribute for files. If file have attribute 644 but must have 755 only enter: **chmod 755 <file_name>**. **Very important is, enter this command in folder, which this files is. If your file is in /var/bin, first enter command **cd /var/bin** and then command **chmod 755 <file_name>**.**



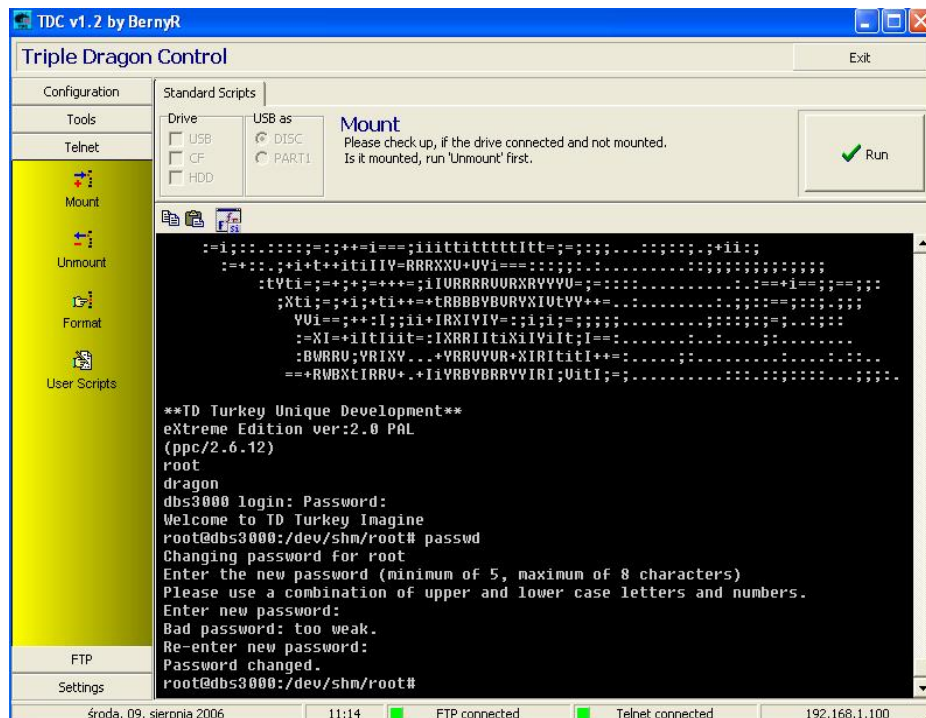
Command **./<file name>**

This command can execute file. **Very important is, use this command in folder, which that file is. If file is in /var/bin then first enter **cd /var/bin** and then **./<file_name>****



Command **passwd**

This command, can change your password, which you use to login to box. Enter **passwd** command and now box asking for new password. New password must be entered twice.



If you have harddisk in your TD, with help this command, you can check, how fast is your HDD.

[illegible]

Command **reboot**

This command, make restart box

[illegible]

Other command

Command **netstat** – show network connection

Command **du** – show directory and subdirectory size in kB.

Command **free** – show used memory + Swap

Command **pwd** – show in, which directory you are now

Command **clear** – clean screen